




<b>TEST REPORT</b> <b>IEC 60950-1</b> <b>Information technology equipment – Safety –</b> <b>Part 1: General requirements</b>	
<b>Report Number.</b> .....	BTL-LVD-1-S1610C139
<b>Tested by (+ signature)</b> .....	Kenny Kong 
<b>Approved by (+ signature)</b> .....	Ben Liu 
<b>Date of issue</b> .....	2016-11-18
<b>Total number of pages</b> .....	38
<b>Testing Laboratory</b> .....	<b>BTL Inc.</b>
<b>Address</b> .....	No.3, JinShaGang 1st Road, ShiXia, Dalang Town, DongGuan, China.
<b>Applicant's name</b> .....	<b>Fanvil Technology Co. Ltd</b>
<b>Address</b> .....	3F, Block A, Gaoxinqi Building, Anhua Industrial Park, Qianjin 1st Rd. 35th Dist., Bao'An, Shenzhen, 518101, China
<b>Test specification:</b>	
<b>Standard</b> .....	IEC 60950-1:2005 (Second Edition) + Am 1:2009 + Am 2:2013 EN 60950-1:2006+A11:2009+A1:2010+A12:2011+A2:2013
<b>Test procedure</b> .....	Service of CE Marking in LVD
<b>Non-standard test method</b> .....	N/A
<b>Test Report Form No.</b> .....	IEC60950_1F (LVD)
<b>Master TRF</b> .....	Dated 2014-02
<b>Test item description</b> .....	IP Phone
<b>Trade Mark</b> .....	
<b>Manufacturer</b> .....	Same as applicant.
<b>Model/Type reference</b> .....	H5, H3
<b>Ratings</b> .....	Input: 5Vdc, 1A or PoE (48Vdc)

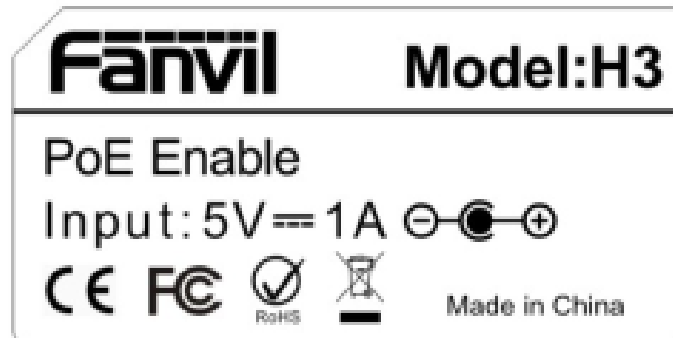
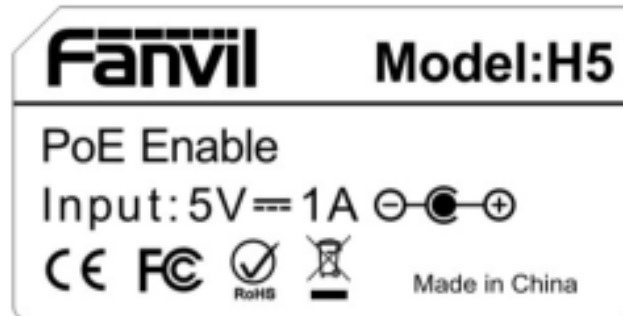
**List of Attachments (including a total number of pages in each attachment):**

- European Group difference and nation differences (19 pages)
- Photos documentation (7 pages)

**Copy of marking plate**

The artwork below may be only a draft.

(Additional requirements for markings. See 1.7 NOTE)



<b>Test item particulars</b> ..... :	
Equipment mobility .....	<input checked="" type="checkbox"/> movable <input checked="" type="checkbox"/> hand-held <input type="checkbox"/> transportable <input type="checkbox"/> stationary <input type="checkbox"/> for building-in <input type="checkbox"/> direct plug-in
Connection to the mains..... :	<input type="checkbox"/> pluggable equipment <input type="checkbox"/> type A <input type="checkbox"/> type B <input type="checkbox"/> permanent connection <input type="checkbox"/> detachable power supply cord <input type="checkbox"/> non-detachable power supply cord <input checked="" type="checkbox"/> not directly connected to the mains
Operating condition .....	<input checked="" type="checkbox"/> continuous <input type="checkbox"/> rated operating / resting time:
Access location..... :	<input checked="" type="checkbox"/> operator accessible <input type="checkbox"/> restricted access location
Over voltage category (OVC) :	<input type="checkbox"/> OVC I <input type="checkbox"/> OVC II <input type="checkbox"/> OVC III <input type="checkbox"/> OVC IV <input checked="" type="checkbox"/> other: not directly connected to the mains
Mains supply tolerance (%) or absolute mains supply values :	N/A
Tested for IT power systems .....	<input type="checkbox"/> Yes <input checked="" type="checkbox"/> No
IT testing, phase-phase voltage (V) .....	N/A
Class of equipment .....	<input type="checkbox"/> Class I <input type="checkbox"/> Class II <input checked="" type="checkbox"/> Class III <input type="checkbox"/> Not classified
Considered current rating of protective device as part of the building installation (A) .....	N/A
Pollution degree (PD) .....	<input type="checkbox"/> PD 1 <input checked="" type="checkbox"/> PD 2 <input type="checkbox"/> PD 3
IP protection class .....	IPX0
Altitude during operation (m) .....	Up to 2000m
Altitude of test laboratory (m) .....	Not over 2000m
Mass of equipment (kg) .....	Approx.0.59kg
<b>Possible test case verdicts:</b>	
- test case does not apply to the test object..... :	N/A (or N)
- test object does meet the requirement..... :	P (Pass)
- test object does not meet the requirement..... :	F (Fail)
<b>Testing</b> ..... :	
Date of receipt of test item .....	2016-10-20
Date(s) of performance of tests .....	2016-10-20 to 2016-11-04
<b>General remarks:</b>	
"(See Enclosure #)" refers to additional information appended to the report. "(See appended table)" refers to a table appended to the report.	
Throughout this report a <input type="checkbox"/> comma / <input checked="" type="checkbox"/> point is used as the decimal separator.	
<b>Name and address of factory (ies) .....</b>	<b>Fanvil Technology Co.Ltd</b> 3F, Block A, Gaoxinqi Building, Anhua Industrial Park, Qianjin 1st Rd. 35th Dist., Bao'An, Shenzhen, 518101, China

**General product information:****Report Summary**

All applicable tests according to the referenced standard(s) have been carried out.

**Product Description**

- The equipment is an IP Phone for use in information technology equipment.
- The equipment consists of SELV circuits of main board and housed in a plastic enclosure.
- The equipment is supplied by an external power adapter or PoE which complies with LPS.

**Model Differences**

- Model H5 is similar to model H3 except for display panel and model designation.
- Unless otherwise specified, all tests were performed on model H5 (See PHOTOS).

**Technical Considerations**

1. The product was submitted and tested for use at the maximum ambient temperature (T<sub>ma</sub>) permitted by the manufacturer's specification of: 40°C
2. The following circuit locations (with circuit/schematic designation) were investigated as a limited power source (LPS): RJ-12port, RJ-45 port and USB port.
3. The external power supply in this equipment was according to IEC/EN 60950-1, and output compiled with limited power source, see table 1.5.1 for details.
4. Instructions and equipment marking related to safety is applied in the language that is acceptable in the country in which the equipment is to be sold.

**Abbreviations used in the report:**


- normal conditions	<b>N.C.</b>	- single fault conditions	<b>S.F.C</b>
- functional insulation	<b>OP</b>	- basic insulation	<b>BI</b>
- double insulation	<b>DI</b>	- supplementary insulation	<b>SI</b>
- between parts of opposite polarity	<b>BOP</b>	- reinforced insulation	<b>RI</b>

**Indicate used abbreviations (if any)**

IEC/EN 60950-1			
Clause	Requirement + Test	Result - Remark	Verdict
<b>1</b>	<b>GENERAL</b>		<b>P</b>
<b>1.5</b>	<b>Components</b>		<b>P</b>
1.5.1	General	See below.	P
	Comply with IEC 60950-1 or relevant component standard	Components which were found to affect safety aspects comply with the requirements of this standard or within the safety aspects of the relevant IEC component standards. (see appended table 1.5.1).	P
1.5.2	Evaluation and testing of components	Components which are certified to IEC and /or national standards are used correctly within their ratings. Components not covered by IEC standards are tested under the conditions present in the equipment.	P
1.5.3	Thermal controls	No such device.	N/A
1.5.4	Transformers		N/A
1.5.5	Interconnecting cables	Interconnection cable to other device is carrying only SELV on an energy level below 240VA.  Except for the insulation material, there are no further requirements for the interconnection cable.	P
1.5.6	Capacitors bridging insulation	No such component.	N/A
1.5.7	Resistors bridging insulation	No such component.	N/A
1.5.7.1	Resistors bridging functional, basic or supplementary insulation		N/A
1.5.7.2	Resistors bridging double or reinforced insulation between a.c. mains and other circuits		N/A
1.5.7.3	Resistors bridging double or reinforced insulation between a.c. mains and antenna or coaxial cable		N/A
1.5.8	Components in equipment for IT power systems		N/A
1.5.9	Surge suppressors	No surge suppressors.	N/A
1.5.9.1	General		N/A
1.5.9.2	Protection of VDRs		N/A
1.5.9.3	Bridging of functional insulation by a VDR		N/A
1.5.9.4	Bridging of basic insulation by a VDR		N/A

IEC/EN 60950-1			
Clause	Requirement + Test	Result - Remark	Verdict
1.5.9.5	Bridging of supplementary, double or reinforced insulation by a VDR		N/A

<b>1.6</b>	<b>Power interface</b>		<b>P</b>
1.6.1	AC power distribution systems	Not direct connected to the AC mains.	N/A
1.6.2	Input current	(see appended table 1.6.2)	P
1.6.3	Voltage limit of hand-held equipment	5Vdc or PoE	P
1.6.4	Neutral conductor	Class III equipment.	N/A

<b>1.7</b>	<b>Marking and instructions</b>		<b>P</b>
1.7.1	Power rating and identification markings		P
1.7.1.1	Power rating marking	The required marking is located on the outside surface of the equipment.	P
	Multiple mains supply connections.....:	Class III equipment.	N/A
	Rated voltage(s) or voltage range(s) (V) .....	5Vdc or PoE	P
	Symbol for nature of supply, for d.c. only .....		P
	Rated frequency or rated frequency range (Hz) ...:	No direct connection to the AC mains supply	N/A
	Rated current (mA or A) .....	1A	P
1.7.1.2	Identification markings	See below.	P
	Manufacturer's name or trade-mark or identification mark .....	Trade-mark: 	P
	Model identification or type reference .....	H5, H3	P
	Symbol for Class II equipment only .....	Class III equipment.	N/A
	Other markings and symbols .....	Additional symbol or marking does not give rise to misunderstanding.	P
1.7.1.3	Use of graphical symbols		N/A
1.7.2	Safety instructions and marking	Safety instruction provided.	P
1.7.2.1	General	Considered.	P
1.7.2.2	Disconnect devices	Class III equipment.	N/A
1.7.2.3	Overcurrent protective device	No such component.	N/A
1.7.2.4	IT power distribution systems	Class III equipment.	N/A
1.7.2.5	Operator access with a tool		N/A
1.7.2.6	Ozone	The equipment does not produce Ozone.	N/A

IEC/EN 60950-1			
Clause	Requirement + Test	Result - Remark	Verdict
1.7.3	Short duty cycles	Equipment is designed for continuous operation.	N/A
1.7.4	Supply voltage adjustment .....	No voltage selector.	N/A
	Methods and means of adjustment; reference to installation instructions .....		N/A
1.7.5	Power outlets on the equipment .....	No outlets provided.	N/A
1.7.6	Fuse identification (marking, special fusing characteristics, cross-reference) .....	Class III equipment.	N/A
1.7.7	Wiring terminals	Class III equipment.	N/A
1.7.7.1	Protective earthing and bonding terminals .....		N/A
1.7.7.2	Terminals for a.c. mains supply conductors		N/A
1.7.7.3	Terminals for d.c. mains supply conductors	No d.c. mains supply.	N/A
1.7.8	Controls and indicators	See below.	P
1.7.8.1	Identification, location and marking .....	The function of controls affecting safety is obvious without knowledge of language etc.	P
1.7.8.2	Colours .....	For functional indication a LED lights when the equipment is operating.	P
1.7.8.3	Symbols according to IEC 60417 .....		N/A
1.7.8.4	Markings using figures .....	No figures used.	N/A
1.7.9	Isolation of multiple power sources .....	Not direct connected to the mains.	N/A
1.7.10	Thermostats and other regulating devices .....	No such component.	N/A
1.7.11	Durability	The label was subjected to the permanence of marking test. The label was rubbed with cloth soaked with water for 15 sec. and then again for 15 sec. with the cloth soaked with petroleum spirit. After this test there was no damage to the label. The marking on the label did not fade. There was no curling nor lifting of the label edge.	P
1.7.12	Removable parts	No marking is located on removable part.	N/A
1.7.13	Replaceable batteries .....	No batteries provided.	N/A
	Language(s) .....		—
1.7.14	Equipment for restricted access locations .....	Not limited for use in restricted access locations.	N/A

IEC/EN 60950-1			
Clause	Requirement + Test	Result - Remark	Verdict
<b>2</b>	<b>PROTECTION FROM HAZARDS</b>		<b>P</b>
2.1	Protection from electric shock and energy hazards		P
2.1.1	Protection in operator access areas	Only SELV circuit inside equipment..	P
2.1.1.1	Access to energized parts		N/A
	Test by inspection .....		N/A
	Test with test finger (Figure 2A) .....		N/A
	Test with test pin (Figure 2B) .....		N/A
	Test with test probe (Figure 2C) .....		N/A
2.1.1.2	Battery compartments		N/A
2.1.1.3	Access to ELV wiring	No internal wiring at ELV accessible to the operator.	N/A
	Working voltage (V <sub>peak</sub> or V <sub>rms</sub> ); minimum distance through insulation (mm)		—
2.1.1.4	Access to hazardous voltage circuit wiring	No hazardous voltage wiring in operator accessible area.	N/A
2.1.1.5	Energy hazards .....	No energy hazard in operator access area.	P
2.1.1.6	Manual controls	No manual control.	N/A
2.1.1.7	Discharge of capacitors in equipment	Class III equipment.	N/A
	Measured voltage (V); time-constant (s).....		—
2.1.1.8	Energy hazards – d.c. mains supply	No direct connected to d.c. mains supply.	N/A
	a) Capacitor connected to the d.c. mains supply ..		N/A
	b) Internal battery connected to the d.c. mains supply .....		N/A
2.1.1.9	Audio amplifiers .....	No audio amplifier.	N/A
2.1.2	Protection in service access areas	No maintenance works in operation mode necessary.	N/A
2.1.3	Protection in restricted access locations	The unit is not limited to be used in restricted access locations.	N/A

<b>2.2</b>	<b>SELV circuits</b>		<b>P</b>
2.2.1	General requirements	See below.	P
2.2.2	Voltages under normal conditions (V) .....	42.4V peak or 60V d.c. are not exceeded in SELV circuit under normal operation.	P
2.2.3	Voltages under fault conditions (V) .....		N/A

IEC/EN 60950-1			
Clause	Requirement + Test	Result - Remark	Verdict
2.2.4	Connection of SELV circuits to other circuits .....	SELV only connected to SELV.	P

<b>2.3</b>	<b>TNV circuits</b>		<b>N/A</b>
2.3.1	Limits	No TNV circuit.	N/A
	Type of TNV circuits..... :		—
2.3.2	Separation from other circuits and from accessible parts		N/A
2.3.2.1	General requirements		N/A
2.3.2.2	Protection by basic insulation		N/A
2.3.2.3	Protection by earthing		N/A
2.3.2.4	Protection by other constructions .....		N/A
2.3.3	Separation from hazardous voltages		N/A
	Insulation employed .....		—
2.3.4	Connection of TNV circuits to other circuits		N/A
	Insulation employed .....		—
2.3.5	Test for operating voltages generated externally		N/A

<b>2.4</b>	<b>Limited current circuits</b>		<b>N/A</b>
2.4.1	General requirements	No limited current circuits.	N/A
2.4.2	Limit values		N/A
	Frequency (Hz) .....		—
	Measured current (mA) .....		—
	Measured voltage (V)..... :		—
	Measured circuit capacitance (nF or μF) .....		—
2.4.3	Connection of limited current circuits to other circuits		N/A

<b>2.5</b>	<b>Limited power sources</b>		<b>P</b>
	a) Inherently limited output	(see appended table 2.5)	P
	b) Impedance limited output		N/A
	c) Regulating network limited output under normal operating and single fault condition	(see appended table 2.5)	P
	d) Overcurrent protective device limited output		N/A
	Max. output voltage (V), max. output current (A), max. apparent power (VA) .....	(See appended table 2.5)	—
	Current rating of overcurrent protective device (A) .:		—
	Use of integrated circuit (IC) current limiters		—

IEC/EN 60950-1			
Clause	Requirement + Test	Result - Remark	Verdict
<b>2.6</b>	<b>Provisions for earthing and bonding</b>		<b>N/A</b>
2.6.1	Protective earthing	Class III equipment.	N/A
2.6.2	Functional earthing		N/A
2.6.3	Protective earthing and protective bonding conductors		N/A
2.6.3.1	General		N/A
2.6.3.2	Size of protective earthing conductors		N/A
	Rated current (A), cross-sectional area (mm <sup>2</sup> ), AWG..... :		—
2.6.3.3	Size of protective bonding conductors		N/A
	Rated current (A), cross-sectional area (mm <sup>2</sup> ), AWG..... :		—
	Protective current rating (A), cross-sectional area (mm <sup>2</sup> ), AWG..... :		N/A
2.6.3.4	Resistance of earthing conductors and their terminations; resistance (Ω), voltage drop (V), test current (A), duration (min)..... :		N/A
2.6.3.5	Colour of insulation .....		N/A
2.6.4	Terminals		N/A
2.6.4.1	General		N/A
2.6.4.2	Protective earthing and bonding terminals		N/A
	Rated current (A), type, nominal thread diameter (mm)..... :		—
2.6.4.3	Separation of the protective earthing conductor from protective bonding conductors		N/A
2.6.5	Integrity of protective earthing		N/A
2.6.5.1	Interconnection of equipment		N/A
2.6.5.2	Components in protective earthing conductors and protective bonding conductors		N/A
2.6.5.3	Disconnection of protective earth		<b>N/A</b>
2.6.5.4	Parts that can be removed by an operator		N/A
2.6.5.5	Parts removed during servicing		N/A
2.6.5.6	Corrosion resistance		N/A
2.6.5.7	Screws for protective bonding		N/A
2.6.5.8	Reliance on telecommunication network or cable distribution system		N/A
<b>2.7</b>	<b>Overcurrent and earth fault protection in primary circuits</b>		<b>N/A</b>
2.7.1	Basic requirements		N/A
	Instructions when protection relies on building installation		N/A

IEC/EN 60950-1			
Clause	Requirement + Test	Result - Remark	Verdict
2.7.2	Faults not simulated in 5.3.7		N/A
2.7.3	Short-circuit backup protection		N/A
2.7.4	Number and location of protective devices ..... :		N/A
2.7.5	Protection by several devices		N/A
2.7.6	Warning to service personnel ..... :		N/A

<b>2.8</b>	<b>Safety interlocks</b>		<b>N/A</b>
2.8.1	General principles		N/A
2.8.2	Protection requirements		N/A
2.8.3	Inadvertent reactivation		N/A
2.8.4	Fail-safe operation		N/A
	Protection against extreme hazard		N/A
2.8.5	Moving parts		N/A
2.8.6	Overriding		N/A
2.8.7	Switches, relays and their related circuits		N/A
2.8.7.1	Separation distances for contact gaps and their related circuits (mm) ..... :		N/A
2.8.7.2	Overload test		N/A
2.8.7.3	Endurance test		N/A
2.8.7.4	Electric strength test		N/A
2.8.8	Mechanical actuators		N/A

<b>2.9</b>	<b>Electrical insulation</b>		<b>P</b>
2.9.1	Properties of insulating materials		N/A
2.9.2	Humidity conditioning		N/A
	Relative humidity (%), temperature (°C) ..... :		—
2.9.3	Grade of insulation	The adequate levels of safety insulation is provided and maintained to comply with the requirements of this standard.	P
2.9.4	Separation from hazardous voltages		N/A
	Method(s) used ..... :		—

<b>2.10</b>	<b>Clearances, creepage distances and distances through insulation</b>		<b>P</b>
2.10.1	General	See below.	P
2.10.1.1	Frequency ..... :		N/A
2.10.1.2	Pollution degrees ..... :	2	P

IEC/EN 60950-1			
Clause	Requirement + Test	Result - Remark	Verdict
2.10.1.3	Reduced values for functional insulation	See clause 5.3.4.	P
2.10.1.4	Intervening unconnected conductive parts		N/A
2.10.1.5	Insulation with varying dimensions		N/A
2.10.1.6	Special separation requirements		N/A
2.10.1.7	Insulation in circuits generating starting pulses		N/A
2.10.2	Determination of working voltage		N/A
2.10.2.1	General		N/A
2.10.2.2	RMS working voltage		N/A
2.10.2.3	Peak working voltage		N/A
2.10.3	Clearances		N/A
2.10.3.1	General		N/A
2.10.3.2	Mains transient voltages	Not direct connected to the mains.	N/A
	a) AC mains supply .....		N/A
	b) Earthed d.c. mains supplies .....		N/A
	c) Unearthed d.c. mains supplies .....		N/A
	d) Battery operation .....		N/A
2.10.3.3	Clearances in primary circuits	No primary circuits provided.	N/A
2.10.3.4	Clearances in secondary circuits	See sub-clause 5.3.4	P
2.10.3.5	Clearances in circuits having starting pulses		N/A
2.10.3.6	Transients from a.c. mains supply .....		N/A
2.10.3.7	Transients from d.c. mains supply .....		N/A
2.10.3.8	Transients from telecommunication networks and cable distribution systems .....		N/A
2.10.3.9	Measurement of transient voltage levels		N/A
	a) Transients from a mains supply		N/A
	For an a.c. mains supply .....		N/A
	For a d.c. mains supply .....		N/A
	b) Transients from a telecommunication network :		N/A
2.10.4	Creepage distances		N/A
2.10.4.1	General		N/A
2.10.4.2	Material group and comparative tracking index		N/A
	CTI tests.....		—
2.10.4.3	Minimum creepage distances		N/A
2.10.5	Solid insulation		N/A
2.10.5.1	General		N/A
2.10.5.2	Distances through insulation		N/A
2.10.5.3	Insulating compound as solid insulation		N/A

IEC/EN 60950-1			
Clause	Requirement + Test	Result - Remark	Verdict
2.10.5.4	Semiconductor devices		N/A
2.10.5.5.	Cemented joints		N/A
2.10.5.6	Thin sheet material – General		N/A
2.10.5.7	Separable thin sheet material		N/A
	Number of layers (pcs)..... :		—
2.10.5.8	Non-separable thin sheet material		N/A
2.10.5.9	Thin sheet material – standard test procedure		N/A
	Electric strength test		—
2.10.5.10	Thin sheet material – alternative test procedure		N/A
	Electric strength test		—
2.10.5.11	Insulation in wound components		N/A
2.10.5.12	Wire in wound components		N/A
	Working voltage ..... :		N/A
	a) Basic insulation not under stress ..... :		N/A
	b) Basic, supplementary, reinforced insulation ..... :		N/A
	c) Compliance with Annex U ..... :		N/A
	Two wires in contact inside wound component; angle between 45° and 90°..... :		N/A
2.10.5.13	Wire with solvent-based enamel in wound components		N/A
	Electric strength test		—
	Routine test		N/A
2.10.5.14	Additional insulation in wound components		N/A
	Working voltage ..... :		N/A
	- Basic insulation not under stress ..... :		N/A
	- Supplementary, reinforced insulation ..... :		N/A
2.10.6	Construction of printed boards		N/A
2.10.6.1	Uncoated printed boards		N/A
2.10.6.2	Coated printed boards		N/A
2.10.6.3	Insulation between conductors on the same inner surface of a printed board		N/A
2.10.6.4	Insulation between conductors on different layers of a printed board		N/A
	Distance through insulation		N/A
	Number of insulation layers (pcs) ..... :		N/A
2.10.7	Component external terminations		N/A
2.10.8	Tests on coated printed boards and coated components	No special coating in order to reduce distance.	N/A
2.10.8.1	Sample preparation and preliminary inspection		N/A

IEC/EN 60950-1			
Clause	Requirement + Test	Result - Remark	Verdict
2.10.8.2	Thermal conditioning		N/A
2.10.8.3	Electric strength test		N/A
2.10.8.4	Abrasion resistance test		N/A
2.10.9	Thermal cycling		N/A
2.10.10	Test for Pollution Degree 1 environment and insulating compound		N/A
2.10.11	Tests for semiconductor devices and cemented joints		N/A
2.10.12	Enclosed and sealed parts		N/A

<b>3</b>	<b>WIRING, CONNECTIONS AND SUPPLY</b>		<b>P</b>
3.1	General		P
3.1.1	Current rating and overcurrent protection	All wires are UL recognized wiring which is PVC insulated, rated VW-1 or FT-1, min. 60°C.	P
3.1.2	Protection against mechanical damage	Wires do not touch sharp edges and heat-sinks which could damage the insulation and cause hazard.	P
3.1.3	Securing of internal wiring	The wires are secured by soldering, solder pins and quick connect terminals so that a loosening of the terminal connection is unlikely.	P
3.1.4	Insulation of conductors	The insulation of the individual conductors are suitable for the application and the working voltage. For the insulation material see 3.1.1.	P
3.1.5	Beads and ceramic insulators	Not used.	N/A
3.1.6	Screws for electrical contact pressure	No such screws provided.	N/A
3.1.7	Insulating materials in electrical connections		N/A
3.1.8	Self-tapping and spaced thread screws	No self tapping screws are used.	N/A
3.1.9	Termination of conductors		N/A
	10 N pull test		N/A
3.1.10	Sleeving on wiring		N/A

<b>3.2</b>	<b>Connection to a mains supply</b>		<b>N/A</b>
3.2.1	Means of connection		N/A
3.2.1.1	Connection to an a.c. mains supply		N/A
3.2.1.2	Connection to a d.c. mains supply		N/A

IEC/EN 60950-1			
Clause	Requirement + Test	Result - Remark	Verdict
3.2.2	Multiple supply connections		N/A
3.2.3	Permanently connected equipment		N/A
	Number of conductors, diameter of cable and conduits (mm) .....		—
3.2.4	Appliance inlets		N/A
3.2.5	Power supply cords		N/A
3.2.5.1	AC power supply cords		N/A
	Type .....		—
	Rated current (A), cross-sectional area (mm <sup>2</sup> ), AWG .....		—
3.2.5.2	DC power supply cords		N/A
3.2.6	Cord anchorages and strain relief		N/A
	Mass of equipment (kg), pull (N) .....		—
	Longitudinal displacement (mm) .....		—
3.2.7	Protection against mechanical damage		N/A
3.2.8	Cord guards		N/A
	Diameter or minor dimension D (mm); test mass (g) .....		—
	Radius of curvature of cord (mm) .....		—
3.2.9	Supply wiring space		N/A

<b>3.3</b>	<b>Wiring terminals for connection of external conductors</b>		<b>N/A</b>
3.3.1	Wiring terminals		N/A
3.3.2	Connection of non-detachable power supply cords		N/A
3.3.3	Screw terminals		N/A
3.3.4	Conductor sizes to be connected		N/A
	Rated current (A), cord/cable type, cross-sectional area (mm <sup>2</sup> ) .....		—
3.3.5	Wiring terminal sizes		N/A
	Rated current (A), type, nominal thread diameter (mm) .....		—
3.3.6	Wiring terminal design		N/A
3.3.7	Grouping of wiring terminals		N/A
3.3.8	Stranded wire		N/A

<b>3.4</b>	<b>Disconnection from the mains supply</b>		<b>N/A</b>
3.4.1	General requirement		N/A
3.4.2	Disconnect devices		N/A
3.4.3	Permanently connected equipment		N/A

IEC/EN 60950-1			
Clause	Requirement + Test	Result - Remark	Verdict
3.4.4	Parts which remain energized		N/A
3.4.5	Switches in flexible cords		N/A
3.4.6	Number of poles - single-phase and d.c. equipment		N/A
3.4.7	Number of poles - three-phase equipment		N/A
3.4.8	Switches as disconnect devices		N/A
3.4.9	Plugs as disconnect devices		N/A
3.4.10	Interconnected equipment		N/A
3.4.11	Multiple power sources		N/A

<b>3.5</b>	<b>Interconnection of equipment</b>		<b>P</b>
3.5.1	General requirements	See below.	P
3.5.2	Types of interconnection circuits .....	Only SELV circuits.	P
3.5.3	ELV circuits as interconnection circuits	No ELV interconnection.	N/A
3.5.4	Data ports for additional equipment	The output of data ports are complying with limited power source also refer to appended table 2.5.	P

<b>4</b>	<b>PHYSICAL REQUIREMENTS</b>		<b>P</b>
4.1	Stability		N/A
	Angle of 10°	The weight of unit is not exceeding 7 kg.	N/A
	Test force (N/A) .....		N/A

<b>4.2</b>	<b>Mechanical strength</b>		<b>P</b>
4.2.1	General		P
	Rack-mounted equipment.		N/A
4.2.2	Steady force test, 10 N		N/A
4.2.3	Steady force test, 30 N		N/A
4.2.4	Steady force test, 250 N		N/A
4.2.5	Impact test		N/A
	Fall test		N/A
	Swing test		N/A
4.2.6	Drop test; height (mm) .....		N/A
4.2.7	Stress relief test		N/A
4.2.8	Cathode ray tubes		N/A
	Picture tube separately certified .....		N/A

IEC/EN 60950-1			
Clause	Requirement + Test	Result - Remark	Verdict
4.2.9	High pressure lamps		N/A
4.2.10	Wall or ceiling mounted equipment; force (N) ..... :		N/A

4.3	Design and construction		P
4.3.1	Edges and corners	All edges and corners are judged to be sufficiently well rounded so as not to constitute a hazard.	P
4.3.2	Handles and manual controls; force (N) ..... :	No handle or manual control.	N/A
4.3.3	Adjustable controls	No control device.	N/A
4.3.4	Securing of parts	No connection likely to be exposed to mechanical stress.	P
4.3.5	Connection by plugs and sockets	No mismatch of connector, plug or socket possible. IEC 60083 and IEC 60320-1 connectors are not used in SELV.	N/A
4.3.6	Direct plug-in equipment	Not direct plug-in equipment.	N/A
	Torque ..... :		—
	Compliance with the relevant mains plug standard ..... :		N/A
4.3.7	Heating elements in earthed equipment	No heating element.	N/A
4.3.8	Batteries	No battery.	N/A
	- Overcharging of a rechargeable battery		N/A
	- Unintentional charging of a non-rechargeable battery		N/A
	- Reverse charging of a rechargeable battery		N/A
	- Excessive discharging rate for any battery		N/A
4.3.9	Oil and grease	No oil or grease.	N/A
4.3.10	Dust, powders, liquids and gases	The equipment in intended use not considered to be exposed to dust, powders, liquids and gases.	N/A
4.3.11	Containers for liquids or gases	No container for liquid or gas.	N/A
4.3.12	Flammable liquids ..... :	No flammable liquid.	N/A
	Quantity of liquid (l) ..... :		N/A
	Flash point (°C) ..... :		N/A
4.3.13	Radiation		P
4.3.13.1	General	See below.	P
4.3.13.2	Ionizing radiation		N/A

IEC/EN 60950-1			
Clause	Requirement + Test	Result - Remark	Verdict
	Measured radiation (pA/kg) .....		—
	Measured high-voltage (kV) .....		—
	Measured focus voltage (kV) .....		—
	CRT markings .....		—
4.3.13.3	Effect of ultraviolet (UV) radiation on materials		N/A
	Part, property, retention after test, flammability classification .....		N/A
4.3.13.4	Human exposure to ultraviolet (UV) radiation .....		N/A
4.3.13.5	Lasers (including laser diodes) and LEDs	See below.	P
4.3.13.5.1	Lasers (including laser laser diodes)	No such compoent.	N/A
	Laser class .....		—
4.3.13.5.2	Light emitting diodes (LEDs)	The AEL of indication LED used is far below the limit for LED Class 1 equipment.	P
4.3.13.6	Other types .....		N/A

<b>4.4</b>	<b>Protection against hazardous moving parts</b>		<b>N/A</b>
4.4.1	General		N/A
4.4.2	Protection in operator access areas .....		N/A
	Household and home/office document/media shredders		N/A
4.4.3	Protection in restricted access locations .....		N/A
4.4.4	Protection in service access areas		N/A
4.4.5	Protection against moving fan blades		N/A
4.4.5.1	General		N/A
	Not considered to cause pain or injury. a).....		N/A
	Is considered to cause pain, not injury. b) .....		N/A
	Considered to cause injury. c) .....		N/A
4.4.5.2	Protection for users		N/A
	Use of symbol or warning .....		N/A
4.4.5.3	Protection for service persons		N/A
	Use of symbol or warning .....		N/A

<b>4.5</b>	<b>Thermal requirements</b>		<b>P</b>
4.5.1	General	No exceeding temperature.	P
4.5.2	Temperature tests	(See appended table 4.5)	P
	Normal load condition per Annex L .....	(See Annex L)	—

IEC/EN 60950-1			
Clause	Requirement + Test	Result - Remark	Verdict
4.5.3	Temperature limits for materials	(See appended table 4.5)	P
4.5.4	Touch temperature limits	(See appended table 4.5)	P
4.5.5	Resistance to abnormal heat .....		N/A

4.6	Openings in enclosures		P
4.6.1	Top and side openings	Consider. The equipment inside is not hazardous voltage and energy hazard.	P
	Dimensions (mm) .....	No openings	—
4.6.2	Bottoms of fire enclosures	Unit supplied by the external power supply which complied with limited power source. No fire enclosure is required.	N/A
	Construction of the bottom, dimensions (mm) ... :		—
4.6.3	Doors or covers in fire enclosures		N/A
4.6.4	Openings in transportable equipment	Not transportable equipment.	N/A
4.6.4.1	Constructional design measures		N/A
	Dimensions (mm) .....		—
4.6.4.2	Evaluation measures for larger openings		N/A
4.6.4.3	Use of metallized parts		N/A
4.6.5	Adhesives for constructional purposes		N/A
	Conditioning temperature (°C), time (weeks) .....		—

4.7	Resistance to fire		P
4.7.1	Reducing the risk of ignition and spread of flame	Use of materials with the required flammability classes.	P
	Method 1, selection and application of components wiring and materials	Selection and application of components and materials which minimize the possibility of ignition and spread of flame.	P
	Method 2, application of all of simulated fault condition tests	Method 1 used only.	N/A
4.7.2	Conditions for a fire enclosure	See below.	P
4.7.2.1	Parts requiring a fire enclosure	See clause 4.7.2.2.	N/A
4.7.2.2	Parts not requiring a fire enclosure	The appliance with: Supply of components in the secondary circuit by a limited power source. The components are mounted on PCB material of flammability rating V-1 min., the fire enclosure construction is not required.	P

IEC/EN 60950-1			
Clause	Requirement + Test	Result - Remark	Verdict
4.7.3	Materials	See below.	P
4.7.3.1	General	PCB rated V-1 or better.	P
4.7.3.2	Materials for fire enclosures	No fire enclosure requirement.	N/A
4.7.3.3	Materials for components and other parts outside fire enclosures	No such component.	N/A
4.7.3.4	Materials for components and other parts inside fire enclosures		N/A
4.7.3.5	Materials for air filter assemblies	No air filter provided.	N/A
4.7.3.6	Materials used in high-voltage components	No high voltage component.	N/A

<b>5</b>	<b>ELECTRICAL REQUIREMENTS AND SIMULATED ABNORMAL CONDITIONS</b>		<b>P</b>
5.1	<b>Touch current and protective conductor current</b>		N/A
5.1.1	General	Class III equipment, and no TNV circuit within it.	N/A
5.1.2	Configuration of equipment under test (EUT)		N/A
5.1.2.1	Single connection to an a.c. mains supply		N/A
5.1.2.2	Redundant multiple connections to an a.c. mains supply		N/A
5.1.2.3	Simultaneous multiple connections to an a.c. mains supply		N/A
5.1.3	Test circuit		N/A
5.1.4	Application of measuring instrument		N/A
5.1.5	Test procedure		N/A
5.1.6	Test measurements		N/A
	Supply voltage (V) ..... :		—
	Measured touch current (mA) ..... :		—
	Max. allowed touch current (mA) ..... :		—
	Measured protective conductor current (mA) ..... :		—
	Max. allowed protective conductor current (mA) ... :		—
5.1.7	Equipment with touch current exceeding 3,5 mA		N/A
5.1.7.1	General ..... :		N/A
5.1.7.2	Simultaneous multiple connections to the supply		N/A
5.1.8	Touch currents to telecommunication networks and cable distribution systems and from telecommunication networks		N/A
5.1.8.1	Limitation of the touch current to a telecommunication network or to a cable distribution system		N/A
	Supply voltage (V) ..... :		—
	Measured touch current (mA) ..... :		—

IEC/EN 60950-1			
Clause	Requirement + Test	Result - Remark	Verdict
	Max. allowed touch current (mA) ..... :		—
5.1.8.2	Summation of touch currents from telecommunication networks		N/A
	a) EUT with earthed telecommunication ports ..... :		N/A
	b) EUT whose telecommunication ports have no reference to protective earth		N/A

<b>5.2</b>	<b>Electric strength</b>		<b>N/A</b>
5.2.1	General		N/A
5.2.2	Test procedure		N/A

<b>5.3</b>	<b>Abnormal operating and fault conditions</b>		<b>P</b>
5.3.1	Protection against overload and abnormal operation	(See appended table 5.3)	P
5.3.2	Motors	No motor.	N/A
5.3.3	Transformers	No transformer.	N/A
5.3.4	Functional insulation ..... :	Method a) and c) used, but due to - Components are mounted on PCB rated V-1 or better. - No basic, supplementary or reinforced insulation inside. no test necessary.	P
5.3.5	Electromechanical components	No electromechanical component.	N/A
5.3.6	Audio amplifiers in ITE ..... :	No such functional.	N/A
5.3.7	Simulation of faults	(see appended table 5.3)	N/A
5.3.8	Unattended equipment		N/A
5.3.9	Compliance criteria for abnormal operating and fault conditions	See below.	P
5.3.9.1	During the tests	No fire propagated beyond the equipment. No molten metal was emitted.	P
5.3.9.2	After the tests		N/A

<b>6</b>	<b>CONNECTION TO TELECOMMUNICATION NETWORKS</b>		<b>N/A</b>
6.1	Protection of telecommunication network service persons, and users of other equipment connected to the network, from hazards in the equipment		N/A
6.1.1	Protection from hazardous voltages		N/A
6.1.2	Separation of the telecommunication network from earth		N/A
6.1.2.1	Requirements	The appliance complies within SELV circuit only.	N/A

IEC/EN 60950-1			
Clause	Requirement + Test	Result - Remark	Verdict
	Supply voltage (V) .....		—
	Current in the test circuit (mA) .....		—
6.1.2.2	Exclusions .....		N/A

<b>6.2</b>	<b>Protection of equipment users from overvoltages on telecommunication networks</b>		<b>N/A</b>
6.2.1	Separation requirements		N/A
6.2.2	Electric strength test procedure		N/A
6.2.2.1	Impulse test		N/A
6.2.2.2	Steady-state test		N/A
6.2.2.3	Compliance criteria		N/A

<b>6.3</b>	<b>Protection of the telecommunication wiring system from overheating</b>		<b>N/A</b>
	Max. output current (A) .....		N/A
	Current limiting method .....		N/A

<b>7</b>	<b>CONNECTION TO CABLE DISTRIBUTION SYSTEMS</b>		<b>N/A</b>
7.1	General		N/A
7.2	Protection of cable distribution system service persons, and users of other equipment connected to the system, from hazardous voltages in the equipment		N/A
7.3	Protection of equipment users from overvoltages on the cable distribution system		N/A
7.4	Insulation between primary circuits and cable distribution systems		N/A
7.4.1	General		N/A
7.4.2	Voltage surge test		N/A
7.4.3	Impulse test		N/A

IEC/EN 60950-1			
Clause	Requirement + Test	Result - Remark	Verdict
<b>A</b>	<b>ANNEX A, TESTS FOR RESISTANCE TO HEAT AND FIRE</b>		<b>N/A</b>
A.1	Flammability test for fire enclosures of movable equipment having a total mass exceeding 18 kg, and of stationary equipment (see 4.7.3.2)		N/A
A.1.1	Samples ..... :		N/A
	Wall thickness (mm)..... :		—
A.1.2	Conditioning of samples; temperature (°C) ..... :		N/A
A.1.3	Mounting of samples ..... :		N/A
A.1.4	Test flame (see IEC 60695-11-3)		N/A
	Flame A, B, C or D ..... :		—
A.1.5	Test procedure		N/A
A.1.6	Compliance criteria		N/A
	Sample 1 burning time (s)..... :		—
	Sample 2 burning time (s)..... :		—
	Sample 3 burning time (s)..... :		—
A.2	Flammability test for fire enclosures of movable equipment having a total mass not exceeding 18 kg, and for material and components located inside fire enclosures (see 4.7.3.2 and 4.7.3.4)		N/A
A.2.1	Samples, material ..... :		N/A
	Wall thickness (mm)..... :		—
A.2.2	Conditioning of samples; temperature (°C) ..... :		N/A
A.2.3	Mounting of samples ..... :		N/A
A.2.4	Test flame (see IEC 60695-11-4)		N/A
	Flame A, B or C ..... :		—
A.2.5	Test procedure		N/A
A.2.6	Compliance criteria		N/A
	Sample 1 burning time (s)..... :		—
	Sample 2 burning time (s)..... :		—
	Sample 3 burning time (s)..... :		—
A.2.7	Alternative test acc. to IEC 60695-11-5, cl. 5 and 9		N/A
	Sample 1 burning time (s)..... :		—
	Sample 2 burning time (s)..... :		—
	Sample 3 burning time (s)..... :		—
A.3	Hot flaming oil test (see 4.6.2)		N/A
A.3.1	Mounting of samples		N/A
A.3.2	Test procedure		N/A
A.3.3	Compliance criterion		N/A

IEC/EN 60950-1			
Clause	Requirement + Test	Result - Remark	Verdict
<b>B</b>	<b>ANNEX B, MOTOR TESTS UNDER ABNORMAL CONDITIONS(see 4.7.2.2 and 5.3.2)</b>		<b>N/A</b>
B.1	General requirements		N/A
	Position .....		—
	Manufacturer .....		—
	Type .....		—
	Rated values .....		—
B.2	Test conditions		N/A
B.3	Maximum temperatures		N/A
B.4	Running overload test		N/A
B.5	Locked-rotor overload test		N/A
	Test duration (days) .....		—
	Electric strength test: test voltage (V) .....		—
B.6	Running overload test for d.c. motors in secondary circuits		N/A
B.6.1	General		N/A
B.6.2	Test procedure		N/A
B.6.3	Alternative test procedure		N/A
B.6.4	Electric strength test; test voltage (V) .....		N/A
B.7	Locked-rotor overload test for d.c. motors in secondary circuits		N/A
B.7.1	General		N/A
B.7.2	Test procedure		N/A
B.7.3	Alternative test procedure		N/A
B.7.4	Electric strength test; test voltage (V) .....		N/A
B.8	Test for motors with capacitors		N/A
B.9	Test for three-phase motors		N/A
B.10	Test for series motors		N/A
	Operating voltage (V) .....		—

<b>C</b>	<b>ANNEX C, TRANSFORMERS (see 1.5.4 and 5.3.3)</b>		<b>N/A</b>
	Position .....	No transformer used.	—
	Manufacturer .....		—
	Type .....		—
	Rated values .....		—
	Method of protection .....		—
C.1	Overload test		N/A
C.2	Insulation		N/A

IEC/EN 60950-1			
Clause	Requirement + Test	Result - Remark	Verdict
	Protection from displacement of windings .....		N/A

<b>D</b>	<b>ANNEX D, MEASURING INSTRUMENTS FOR TOUCH-CURRENT TESTS (see 5.1.4)</b>		<b>N/A</b>
D.1	Measuring instrument		N/A
D.2	Alternative measuring instrument		N/A

<b>E</b>	<b>ANNEX E, TEMPERATURE RISE OF A WINDING (see 1.4.13)</b>		<b>N/A</b>
----------	--	--	------------

<b>F</b>	<b>ANNEX F, MEASUREMENT OF CLEARANCES AND CREEPAGE DISTANCES (see 2.10 and Annex G)</b>		<b>N/A</b>
----------	---	--	------------

<b>G</b>	<b>ANNEX G, ALTERNATIVE METHOD FOR DETERMINING MINIMUM CLEARANCES</b>		<b>N/A</b>
G.1	Clearances		N/A
G.1.1	General		N/A
G.1.2	Summary of the procedure for determining minimum clearances		N/A
G.2	Determination of mains transient voltage (V)		N/A
G.2.1	AC mains supply .....		N/A
G.2.2	Earthed d.c. mains supplies .....		N/A
G.2.3	Unearthed d.c. mains supplies .....		N/A
G.2.4	Battery operation .....		N/A
G.3	Determination of telecommunication network transient voltage (V) .....		N/A
G.4	Determination of required withstand voltage (V)		N/A
G.4.1	Mains transients and internal repetitive peaks .....		N/A
G.4.2	Transients from telecommunication networks .....		N/A
G.4.3	Combination of transients		N/A
G.4.4	Transients from cable distribution systems		N/A
G.5	Measurement of transient voltages (V)		N/A
	a) Transients from a mains supply		N/A
	For an a.c. mains supply		N/A
	For a d.c. mains supply		N/A
	b) Transients from a telecommunication network		N/A
G.6	Determination of minimum clearances .....		N/A

<b>H</b>	<b>ANNEX H, IONIZING RADIATION (see 4.3.13)</b>		<b>N/A</b>
----------	---	--	------------

IEC/EN 60950-1			
Clause	Requirement + Test	Result - Remark	Verdict

<b>J</b>	<b>ANNEX J, TABLE OF ELECTROCHEMICAL POTENTIALS (see 2.6.5.6)</b>		<b>N/A</b>
	Metal(s) used .....		—

<b>K</b>	<b>ANNEX K, THERMAL CONTROLS (see 1.5.3 and 5.3.8)</b>		<b>N/A</b>
K.1	Making and breaking capacity	No thermal control.	N/A
K.2	Thermostat reliability; operating voltage (V) .....		N/A
K.3	Thermostat endurance test; operating voltage (V) :		N/A
K.4	Temperature limiter endurance; operating voltage (V) .....		N/A
K.5	Thermal cut-out reliability		N/A
K.6	Stability of operation		N/A

<b>L</b>	<b>ANNEX L, NORMAL LOAD CONDITIONS FOR SOME TYPES OF ELECTRICAL BUSINESS EQUIPMENT (see 1.2.2.1 and 4.5.2)</b>		<b>P</b>
L.1	Typewriters		N/A
L.2	Adding machines and cash registers		N/A
L.3	Erasers		N/A
L.4	Pencil sharpeners		N/A
L.5	Duplicators and copy machines		N/A
L.6	Motor-operated files		N/A
L.7	Other business equipment	Maximum normal load.	P

<b>M</b>	<b>ANNEX M, CRITERIA FOR TELEPHONE RINGING SIGNALS (see 2.3.1)</b>		<b>N/A</b>
M.1	Introduction		N/A
M.2	Method A		N/A
M.3	Method B		N/A
M.3.1	Ringling signal		N/A
M.3.1.1	Frequency (Hz) .....		—
M.3.1.2	Voltage (V) .....		—
M.3.1.3	Cadence; time (s), voltage (V) .....		—
M.3.1.4	Single fault current (mA) .....		—
M.3.2	Tripping device and monitoring voltage .....		N/A
M.3.2.1	Conditions for use of a tripping device or a monitoring voltage		N/A
M.3.2.2	Tripping device		N/A
M.3.2.3	Monitoring voltage (V) .....		N/A

IEC/EN 60950-1			
Clause	Requirement + Test	Result - Remark	Verdict
<b>N</b>	<b>ANNEX N, IMPULSE TEST GENERATORS (see 1.5.7.2, 1.5.7.3, 2.10.3.9, 6.2.2.1, 7.3.2, 7.4.3 and Clause G.5)</b>		<b>N/A</b>
N.1	ITU-T impulse test generators		N/A
N.2	IEC 60065 impulse test generator		N/A
<b>P</b>	<b>ANNEX P, NORMATIVE REFERENCES</b>		<b>P</b>
<b>Q</b>	<b>ANNEX Q, Voltage dependent resistors (VDRs) (see 1.5.9.1)</b>		<b>N/A</b>
	a) Preferred climatic categories .....	No VDRs used.	N/A
	b) Maximum continuous voltage .....		N/A
	c) Pulse current .....		N/A
<b>R</b>	<b>ANNEX R, EXAMPLES OF REQUIREMENTS FOR QUALITY CONTROL PROGRAMMES</b>		<b>N/A</b>
R.1	Minimum separation distances for unpopulated coated printed boards (see 2.10.6.2)		N/A
R.2	Reduced clearances (see 2.10.3)		N/A
<b>S</b>	<b>ANNEX S, PROCEDURE FOR IMPULSE TESTING (see 6.2.2.3)</b>		<b>N/A</b>
S.1	Test equipment		N/A
S.2	Test procedure		N/A
S.3	Examples of waveforms during impulse testing		N/A
<b>T</b>	<b>ANNEX T, GUIDANCE ON PROTECTION AGAINST INGRESS OF WATER (see 1.1.2)</b>		<b>N/A</b>
	See separate test report		—
<b>U</b>	<b>ANNEX U, INSULATED WINDING WIRES FOR USE WITHOUT INTERLEAVED INSULATION (see 2.10.5.4)</b>		<b>N/A</b>
	See separate test report		—
<b>V</b>	<b>ANNEX V, AC POWER DISTRIBUTION SYSTEMS (see 1.6.1)</b>		<b>N/A</b>
V.1	Introduction		N/A
V.2	TN power distribution systems		N/A
<b>W</b>	<b>ANNEX W, SUMMATION OF TOUCH CURRENTS</b>		<b>N/A</b>
W.1	Touch current from electronic circuits		N/A
W.1.1	Floating circuits		N/A
W.1.2	Earthed circuits		N/A

IEC/EN 60950-1			
Clause	Requirement + Test	Result - Remark	Verdict
W.2	Interconnection of several equipments		N/A
W.2.1	Isolation		N/A
W.2.2	Common return, isolated from earth		N/A
W.2.3	Common return, connected to protective earth		N/A
<b>X</b>	<b>ANNEX X, MAXIMUM HEATING EFFECT IN TRANSFORMER TESTS (see clause C.1)</b>		<b>N/A</b>
X.1	Determination of maximum input current		N/A
X.2	Overload test procedure		N/A
<b>Y</b>	<b>ANNEX Y, ULTRAVIOLET LIGHT CONDITIONING TEST (see 4.3.13.3)</b>		<b>N/A</b>
Y.1	Test apparatus .....		N/A
Y.2	Mounting of test samples .....		N/A
Y.3	Carbon-arc light-exposure apparatus .....		N/A
Y.4	Xenon-arc light exposure apparatus .....		N/A
<b>Z</b>	<b>ANNEX Z, OVERVOLTAGE CATEGORIES (see 2.10.3.2 and Clause G.2)</b>		<b>N/A</b>
<b>AA</b>	<b>ANNEX AA, MANDREL TEST (see 2.10.5.8)</b>		<b>N/A</b>
<b>BB</b>	<b>ANNEX BB, CHANGES IN THE SECOND EDITION</b>		—
<b>CC</b>	<b>ANNEX CC, Evaluation of integrated circuit (IC) current limiters</b>		<b>N/A</b>
CC.1	General		N/A
CC.2	Test program 1.....		N/A
CC.3	Test program 2.....		N/A
<b>DD</b>	<b>ANNEX DD, Requirements for the mounting means of rack-mounted equipment</b>		<b>N/A</b>
DD.1	General		N/A
DD.2	Mechanical strength test, variable N/A.....		N/A
DD.3	Mechanical strength test, 250N, including end stops.....		N/A
DD.4	Compliance.....		N/A
<b>EE</b>	<b>ANNEX EE, Household and home/office document/media shredders</b>		<b>N/A</b>
EE.1	General		N/A

IEC/EN 60950-1			
Clause	Requirement + Test	Result - Remark	Verdict
EE.2	Markings and instructions		N/A
	Use of markings or symbols.....:		N/A
	Information of user instructions, maintenance and/or servicing instructions.....:		N/A
EE.3	Inadvertent reactivation test.....:		N/A
EE.4	Disconnection of power to hazardous moving parts:		N/A
	Use of markings or symbols.....:		N/A
EE.5	Protection against hazardous moving parts		N/A
	Test with test finger (Figure 2A) .....		N/A
	Test with wedge probe (Figure EE1 and EE2) .....		N/A

IEC/EN 60950-1			
Clause	Requirement + Test	Result - Remark	Verdict

<b>1.5.1</b>	<b>TABLE: List of critical components</b>					<b>P</b>
Object/part No.	Manufacturer/ trademark	Type/model	Technical data	Standard (Edition / year)	Mark(s) of conformity <sup>1)</sup>	
Plastic Enclosure	Interchangeable	Interchangeable	HB or better, thickness 1.5 mm min.	UL 94	UL	
PCB	Interchangeable	Interchangeable	V-1 or better, min. 105°C	UL 796	UL	
External power adapter	Shenzhen Frecom Electronics Co., Ltd.	F05L5-050100SPAV	i/p: 100-240Vac, 50/60Hz, 0.2A; o/p: 5Vdc, 1.0A; Class II, 45°C, 5000m, compiled with LPS.	EN 60950-1:2006/A2:2013	LVD by TÜVSÜD (Certificate No. N8A 15 08 78130 083, Report No. 65.210.14.080.0 3)	
Speaker	--	--	6ohms, 2W	--	--	

Supplementary information:

1) An asterisk indicates a mark that assures the agreed level of surveillance.

<b>1.5.1</b>	<b>TABLE: Opto Electronic Devices</b>	<b>N/A</b>
Manufacturer.....:		
Type.....:		
Separately tested.....:		
Bridging insulation.....:		
External creepage distance.....:		
Internal creepage distance.....:		
Distance through insulation.....:		
Tested under the following conditions.....:		
Input.....:		
Output.....:		
supplementary information		

IEC/EN 60950-1						
Clause	Requirement + Test				Result - Remark	Verdict
<b>1.6.2</b>	<b>TABLE: Electrical data (in normal conditions)</b>					<b>P</b>
U (V)	I (A)	I <sub>rated</sub> (A)	P (W)	Fuse #	I <sub>fuse</sub> (A)	Condition/status
Supply by DC source(Ring mode)						
5Vdc	0.682	1.0	3.41	--	--	maximum normal load
Supply by DC source(Call mode)						
5Vdc	0.735	1.0	3.67	--	--	maximum normal load
Supply by POE source(Ring mode)						
48Vdc	0.0853	--	4.09	--	--	maximum normal load
Supply by POE source(Call mode)						
48Vdc	0.120	--	5.76	--	--	maximum normal load
Supplementary information: RJ45 and computer connection, and constantly to transmit data. 2 phone calls to each other. One USB load 0.5A						

<b>2.1.1.5 c) 1)</b>	<b>TABLE: max. V, A, VA test</b>				<b>N/A</b>
Voltage (rated) (V)	Current (rated) (A)	Voltage (max.) (V)	Current (max.) (A)	VA (max.) (VA)	
--	--	--	--	--	
supplementary information:					

<b>2.1.1.5 c) 2)</b>	<b>TABLE: stored energy</b>		<b>N/A</b>
Capacitance C (μF)	Voltage U (V)	Energy E (J)	
--	--	--	
supplementary information:			

<b>2.2</b>	<b>TABLE: evaluation of voltage limiting components in SELV circuits</b>			<b>N/A</b>
Component (measured between)	max. voltage (V) (normal operation)		Voltage Limiting Components	
	V peak	V d.c.		
--	--	--	--	
Fault test performed on voltage limiting components	Voltage measured (V) in SELV circuits (V peak or V d.c.)			
--	--			
supplementary information:				

IEC/EN 60950-1						
Clause	Requirement + Test	Result - Remark			Verdict	
<b>2.5</b>	<b>TABLE: Limited power sources</b>					<b>P</b>
Circuit output tested: see below						
Note: Measured Uoc (V) with all load circuits disconnected:						
Components	Single fault condition	Uoc (V)	I <sub>sc</sub> (A)		VA	
			Meas.	Limit	Meas.	Limit
RJ45 port all pin to return	--	0	0	8	0	100
RJ12 port all pin to return	--	0	0	8	0	100
USB port pin 1 to return	--	4.99	0.65	8	2.977 (4.58X0.65)	100
USB port pin 1 to return	U15 pin1 to pin5 S-C	5.01	1.06	8	4.801 (1.06X4.53)	100
USB port pin 2, 3, 4 to return	--	0	0	8	0	100
supplementary information:						
S-C=short circuit, O-C=open circuit						

<b>2.10.2</b>	<b>Table: working voltage measurement</b>			<b>N/A</b>
Location	RMS voltage (V)	Peak voltage (V)	Comments	
--	--	--	--	
supplementary information:				

<b>2.10.3 and 2.10.4</b>	<b>TABLE: Clearance and creepage distance measurements</b>						<b>N/A</b>
Clearance (cl) and creepage distance (cr) at/of/between:	U peak (V)	U r.m.s. (V)	Required cl (mm)	cl (mm)	Required cr (mm)	cr (mm)	
Functional:							
--	--	--	--	--	--	--	
Basic/supplementary:							
--	--	--	--	--	--	--	
Reinforced:							
--	--	--	--	--	--	--	
Supplementary information:							

IEC/EN 60950-1					
Clause	Requirement + Test	Result - Remark			Verdict
<b>2.10.5</b>	<b>TABLE: Distance through insulation measurements</b>				<b>N/A</b>
Distance through insulation (DTI) at/of:		U peak (V)	U rms (V)	Test voltage (V)	Required DTI (mm)
--		--	--	--	--
Supplementary information:					

<b>4.3.8</b>	<b>TABLE: Batteries</b>								<b>N/A</b>
The tests of 4.3.8 are applicable only when appropriate battery data is not available				--				--	
Is it possible to install the battery in a reverse polarity position?				--				--	
	Non-rechargeable batteries			Rechargeable batteries					
	Discharging		Un-intentional charging	Charging		Discharging		Reversed charging	
	Meas. current	Manuf. Specs.		Meas. current	Manuf. Specs.	Meas. current	Manuf. Specs.	Meas. current	Manuf. Specs.
Max. current during normal condition	--	--	--	--	--	--	--	--	--
Max. current during fault condition	--	--	--	--	--	--	--	--	--
Test results:									
- Chemical leaks				--				Verdict	
- Explosion of the battery				--				--	
- Emission of flame or expulsion of molten metal				--				--	
- Electric strength tests of equipment after completion of tests				--				--	
Supplementary information:									

<b>4.3.8</b>	<b>TABLE: Batteries</b>								<b>N/A</b>
Battery category ..... : (Lithium, NiMh, NiCad, Lithium Ion ...)									
Manufacturer..... :									
Type / model..... :									
Voltage..... :									
Capacity..... :									
Tested and Certified by (incl. Ref. No.)..... :									
Circuit protection diagram:									

IEC/EN 60950-1			
Clause	Requirement + Test	Result - Remark	Verdict

<b>4.5</b>	<b>TABLE: Thermal requirements</b>						<b>P</b>	
	Supply voltage (V) .....	5Vdc		POE		--	—	
	Ambient T <sub>min</sub> (°C) .....	--	--	--	--	--	—	
	Ambient T <sub>max</sub> (°C) .....	See below	Shift to 40°C	See below	Shift to 40°C	--	—	
Maximum measured temperature T of part/at::		T (°C)					Allowed T <sub>max</sub> (°C)	
01.DC Jack		31.5	46.4	45.1	59.1	--	70	
02.CE2 body		32.7	47.6	56.0	70.0	--	85	
03.L45 body		32.7	47.6	58.8	72.8	--	105	
04.PWB near U1		40.4	55.3	47.5	61.5	--	105	
05.PWB near U5		39.4	54.3	45.4	59.4	--	105	
06.PWB near U7 and U8		38.8	53.7	44.7	58.7	--	105	
07.Panel		25.2	40.1	28.1	42.1	--	95	
08.Telephone receiver		25.4	40.3	26.9	40.9	--	75	
09.Internal enclosure near U1		39.7	54.6	42.8	56.8	--	--	
10.Outer enclosure near U1		34.0	48.9	36.5	50.5	--	95	
11.Key body		28.6	43.5	31.0	45.0	--	75	
12.Ambient		25.1	40.0	26.0	40.0	--	--	
Supplementary information:								
1. The temperatures were measured under the worst case of normal mode defined in sub-clause 1.2.2.1 and as described in sub-clause 1.6.2 at voltages as described above.								
2. With a specified ambient temperature of + 40°C. Therefore the maximum temperatures measured are recalculated as follows: T + (40 – Tamb), where T is the maximum temperature measured during test and Tamb is the ambient temperature during the test.								
Temperature T of winding:		t <sub>1</sub> (°C)	R <sub>1</sub> (Ω)	t <sub>2</sub> (°C)	R <sub>2</sub> (Ω)	T (°C)	Allowed T <sub>max</sub> (°C)	Insulation class
--		--	--	--	--	--	--	--
Supplementary information:								

<b>4.5.5</b>	<b>TABLE: Ball pressure test of thermoplastic parts</b>			<b>N/A</b>
	Allowed impression diameter (mm) .....	≤ 2 mm		—
Part			Test temperature (°C)	Impression diameter (mm)
--			--	--
Supplementary information:				

IEC/EN 60950-1			
Clause	Requirement + Test	Result - Remark	Verdict

<b>4.6.1, 4.6.2</b>	<b>TABLE: Enclosure openings</b>		<b>N/A</b>
Location	Size (mm)	Comments	
--	--	--	
Supplementary information:			
1. External Adapter complied with LPS.			
2. No hazardous voltage and energy hazardous conductive parts were located within 5° projection.			

<b>4.7</b>	<b>TABLE: Resistance to fire</b>					<b>N/A</b>
Part	Manufacturer of material	Type of material	Thickness (mm)	Flammability class	Evidence	
--	--	--	--	--	--	
Supplementary information:						

<b>5.1</b>	<b>TABLE: touch current measurement</b>			<b>N/A</b>
Measured between:	Measured (mA)	Limit (mA)	Comments/conditions	
--	--	--	--	
supplementary information:				

<b>5.2</b>	<b>TABLE: Electric strength tests, impulse tests and voltage surge tests</b>			<b>N/A</b>
Test voltage applied between:	Voltage shape (AC, DC, impulse, surge)	Test voltage (V)	Breakdown Yes / No	
Functional:	--	--	--	
Basic/supplementary:	--	--	--	
Reinforced:	--	--	--	
Supplementary information:				

<b>5.3</b>	<b>TABLE: Fault condition tests</b>		<b>P</b>
	Ambient temperature (°C) .....	--	—
	Power source for EUT: Manufacturer, model/type, output rating .....	--	—

IEC/EN 60950-1							
Clause	Requirement + Test					Result - Remark	Verdict
Component No.	Fault	Supply voltage (V)	Test time	Fuse #	Fuse current (A)	Observation	
Speaker	Short	5V	10min	--	--	Speaker shutdown, other normal work, no damaged, no hazards.	
Speaker	Short	48V	10min	--	--	Speaker shutdown, other normal work, no damaged, no hazards.	
Supplementary information:							

IEC/EN 60950-1							
Clause	Requirement + Test			Result - Remark			Verdict
<b>C.2</b>	<b>TABLE: transformers</b>						<b>N/A</b>
Loc.	Tested insulation	Working voltage peak / V (2.10.2)	Working voltage rms / V (2.10.2)	Required electric strength (5.2)	Required clearance / mm (2.10.3)	Required creepage distance / mm (2.10.4)	Required distance thr. insul. (2.10.5)
--	--	--	--	--	--	--	--
Loc.	Tested insulation			Test voltage / V	Measured clearance / mm	Measured creepage dist. / mm	Measured distance thr. insul. / mm; number of layers
--	--	--	--	--	--	--	--
supplementary information:							
.							

<b>C.2</b>	<b>TABLE: transformers</b>						<b>N/A</b>
Transformer							

IEC60950			
Clause	Requirement + Test	Result - Remark	Verdict

**List of test equipment used:**

A completed list of used test equipment shall be provided in the Test Reports when a Manufacturer Testing Laboratory according to TMP/CTF stage 1 or WMT/CTF stage 2 procedure has been used.

Clause	Measurement / testing	Testing / measuring equipment / material used	Range used	Calibration date

IEC60950_1F - ATTACHMENT			
Clause	Requirement + Test	Result - Remark	Verdict

<b>ATTACHMENT TO TEST REPORT IEC 60950-1</b> <b>EUROPEAN GROUP DIFFERENCES AND NATIONAL DIFFERENCES</b> Information technology equipment – Safety – PART 1: GENERAL REQUIREMENTS			
Differences according to.....: EN 60950-1:2006/A11:2009/A1:2010/A12:2011/A2:2013			
Attachment Form No. ....: EU_GD_IEC60950_1F			
Attachment Originator.....: SGS Fimko Ltd			
Master Attachment.....: Dated 2014-02			
Copyright © 2014 IEC System for Conformity Testing and Certification of Electrical Equipment (IECEE), Geneva, Switzerland. All rights reserved.			

<b>EN 60950-1:2006/A11:2009/A1:2010/A12:2011/A2:2013 – CENELEC COMMON MODIFICATIONS</b>
---

IEC 60950-1, GROUP DIFFERENCES (CENELEC common modifications EN)			
Clause	Requirement + Test	Result - Remark	Verdict
	Clauses, subclauses, notes, tables and figures which are additional to those in IEC60950-1 and it's amendmets are prefixed "Z"		P
Contents  (A2:2013)	Add the following annexes: Annex ZA (normative) Normative references to international publications with their corresponding European publications Annex ZB (normative) Special national conditions Annex ZD (informative) IEC and CENELEC code designations for flexible cords		P
General	Delete all the "country" notes in the reference document (IEC 60950-1:2005) according to the following list: 1.4.8 Note 2    1.5.1 Note 2 & 3    1.5.7.1 Note 1.5.8 Note 2    1.5.9.4 Note    1.7.2.1 Note 4, 5 & 6 2.2.3 Note    2.2.4 Note    2.3.2 Note 2.3.2.1 Note 2    2.3.4 Note 2    2.6.3.3 Note 2 & 3 2.7.1 Note    2.10.3.2 Note 2    2.10.5.13 Note 3 3.2.1.1 Note    3.2.4 Note 3.    2.5.1 Note 2 4.3.6 Note 1 & 2    4.7 Note 4    4.7.2.2 Note 4.7.3.1 Note 2    5.1.7.1 Note 3 & 4    5.3.7 Note 1 6 Note 2 & 5    6.1.2.1 Note 2    6.1.2.2 Note 6.2.2 Note    6.2.2.1 Note 2    6.2.2.2 Note 7.1 Note 3    7.2 Note    7.3 Note 1 & 2 G.2.1 Note 2    Annex H Note 2		P
General (A1:2010)	Delete all the "country" notes in the reference document (IEC 60950-1:2005/A1:2010) according to the following list: 1.5.7.1 Note    6.1.2.1 Note 2 6.2.2.1 Note 2    EE.3 Note		P



IEC60950_1F - ATTACHMENT			
Clause	Requirement + Test	Result - Remark	Verdict


IEC 60950-1, GROUP DIFFERENCES (CENELEC common modifications EN)			
Clause	Requirement + Test	Result - Remark	Verdict
	<p><b>Zx Protection against excessive sound pressure from personal music players</b></p>		N/A
	<p><b>Zx.1 General</b>            This sub-clause specifies requirements for protection against excessive sound pressure from personal music players that are closely coupled to the ear. It also specifies requirements for earphones and headphones intended for use with personal music players.</p> <p>A personal music player is a portable equipment for personal use, that:            is designed to allow the user to listen to recorded or broadcast sound or video; and primarily uses headphones or earphones that can be worn in or on or around the ears; and allows the user to walk around while in use.            NOTE 1 Examples are hand-held or body-worn portable CD players, MP3 audio players, mobile phones with MP3 type features, PDA's or similar equipment.</p> <p>A personal music player and earphones or headphones intended to be used with personal music players shall comply with the requirements of this sub-clause.</p> <p>The requirements in this sub-clause are valid for music or video mode only.</p> <p>The requirements do not apply:            while the personal music player is connected to an external amplifier; or            while the headphones or earphones are not used.            NOTE 2 An external amplifier is an amplifier which is not part of the personal music player or the listening device, but which is intended to play the music as a standalone music player.</p> <p>The requirements do not apply to:            hearing aid equipment and professional equipment;            NOTE 3 Professional equipment is equipment sold through special sales channels. All products sold through normal electronics stores are considered not to be professional equipment.</p>	No portable sound system	N/A
	<p>analogue personal music players (personal music players without any kind of digital processing of the sound signal) that are brought to the market before the end of 2015.            NOTE 4 This exemption has been allowed because this technology is falling out of use and it is expected that within a few years it will no longer exist. This exemption will not be extended to other technologies.</p> <p>For equipment which is clearly designed or intended for use by young children, the limits of EN 71-1 apply.</p>		

IEC60950_1F - ATTACHMENT			
Clause	Requirement + Test	Result - Remark	Verdict

IEC 60950-1, GROUP DIFFERENCES (CENELEC common modifications EN)			
Clause	Requirement + Test	Result - Remark	Verdict
	<p><b>Zx.2 Equipment requirements</b>            No safety provision is required for equipment that complies with the following:            equipment provided as a package (personal music player with its listening device), where the acoustic output <math>L_{Aeq,T}</math> is <math>\leq 85</math> dBA measured while playing the fixed “programme simulation noise” as described in EN 50332-1; and            a personal music player provided with an analogue electrical output socket for a listening device, where the electrical output is <math>\leq 27</math> mV measured as described in EN 50332-2, while playing the fixed “programme simulation noise” as described in EN 50332-1.</p> <p>NOTE 1 Wherever the term acoustic output is used in this clause, the 30 s A-weighted equivalent sound pressure level <math>L_{Aeq,T}</math> is meant. See also Zx.5 and Annex Zx.</p> <p>All other equipment shall:            a) protect the user from unintentional acoustic outputs exceeding those mentioned above; and            b) have a standard acoustic output level not exceeding those mentioned above, and automatically return to an output level not exceeding those mentioned above when the power is switched off; and</p>	No portable sound system	N/A

IEC60950_1F - ATTACHMENT			
Clause	Requirement + Test	Result - Remark	Verdict

IEC 60950-1, GROUP DIFFERENCES (CENELEC common modifications EN)			
Clause	Requirement + Test	Result - Remark	Verdict
	<p>c) provide a means to actively inform the user of the increased sound pressure when the equipment is operated with an acoustic output exceeding those mentioned above. Any means used shall be acknowledged by the user before activating a mode of operation which allows for an acoustic output exceeding those mentioned above. The acknowledgement does not need to be repeated more than once every 20 h of cumulative listening time; and</p> <p>NOTE 2 Examples of means include visual or audible signals. Action from the user is always required.</p> <p>NOTE 3 The 20 h listening time is the accumulative listening time, independent how often and how long the personal music player has been switched off.</p> <p>d) have a warning as specified in Zx.3; and</p> <p>e) not exceed the following:</p> <ol style="list-style-type: none"> <li>1) equipment provided as a package (player with its listening device), the acoustic output shall be <math>\leq 100</math> dBA measured while playing the fixed "programme simulation noise" described in EN 50332-1; and</li> <li>2) a personal music player provided with an analogue electrical output socket for a listening device, the electrical output shall be <math>\leq 150</math> mV measured as described in EN 50332-2, while playing the fixed "programme simulation noise" described in EN 50332-1.</li> </ol> <p>For music where the average sound pressure (long term <math>L_{Aeq,T}</math>) measured over the duration of the song is lower than the average produced by the programme simulation noise, the warning does not need to be given as long as the average sound pressure of the song is below the basic limit of 85 dBA. In this case T becomes the duration of the song.</p> <p>NOTE 4 Classical music typically has an average sound pressure (long term <math>L_{Aeq,T}</math>) which is much lower than the average programme simulation noise. Therefore, if the player is capable to analyse the song and compare it with the programme simulation noise, the warning does not need to be given as long as the average sound pressure of the song is below the basic limit of 85 dBA.</p> <p>For example, if the player is set with the programme simulation noise to 85 dBA, but the average music level of the song is only 65 dBA, there is no need to give a warning or ask an acknowledgement as long as the average sound level of the song is not above the basic limit of 85 dBA.</p>	No portable sound system	N/A

IEC60950_1F - ATTACHMENT			
Clause	Requirement + Test	Result - Remark	Verdict
<b>IEC 60950-1, GROUP DIFFERENCES (CENELEC common modifications EN)</b>			
Clause	Requirement + Test	Result - Remark	Verdict
	<p><b>Zx.3 Warning</b>                      The warning shall be placed on the equipment, or on the packaging, or in the instruction manual and shall consist of the following:                      the symbol of Figure 1 with a minimum height of 5 mm; and                      the following wording, or similar:                      "To prevent possible hearing damage, do not listen at high volume levels for long periods."</p> <div style="text-align: center;">  </div> <p><b>Figure 1 – Warning label (IEC 60417-6044)</b></p> <p>Alternatively, the entire warning may be given through the equipment display during use, when the user is asked to acknowledge activation of the higher level.</p>	No portable sound system	N/A
	<b>Zx.4 Requirements for listening devices (headphones and earphones)</b>		N/A
	<p><b>Zx.4.1 Wired listening devices with analogue input</b>                      With 94 dBA sound pressure output <math>L_{Aeq,T}</math>, the input voltage of the fixed "programme simulation noise" described in EN 50332-2 shall be <math>\geq 75</math> mV.                      This requirement is applicable in any mode where the headphones can operate (active or passive), including any available setting (for example built-in volume level control).                      NOTE The values of 94 dBA – 75 mV correspond with 85dBA – 27 mV and 100 dBA – 150 mV.</p>	No listening devices	N/A

IEC60950_1F - ATTACHMENT			
Clause	Requirement + Test	Result - Remark	Verdict
<b>IEC 60950-1, GROUP DIFFERENCES (CENELEC common modifications EN)</b>			
Clause	Requirement + Test	Result - Remark	Verdict
	<p><b>Zx.4.2 Wired listening devices with digital input</b>            With any playing device playing the fixed “programme simulation noise” described in EN 50332-1 (and respecting the digital interface standards, where a digital interface standard exists that specifies the equivalent acoustic level), the acoustic output <math>L_{Aeq,T}</math> of the listening device shall be <math>\leq 100</math> dBA.</p> <p>This requirement is applicable in any mode where the headphones can operate, including any available setting (for example built-in volume level control, additional sound feature like equalization, etc.).</p> <p>NOTE An example of a wired listening device with digital input is a USB headphone.</p>		N/A
	<p><b>Zx.4.3 Wireless listening devices</b>            In wireless mode:            with any playing and transmitting device playing the fixed programme simulation noise described in EN 50332-1; and            respecting the wireless transmission standards, where an air interface standard exists that specifies the equivalent acoustic level; and            with volume and sound settings in the listening device (for example built-in volume level control, additional sound feature like equalization, etc.) set to the combination of positions that maximize the measured acoustic output for the abovementioned programme simulation noise, the acoustic output <math>L_{Aeq,T}</math> of the listening device shall be <math>\leq 100</math> dBA.</p> <p>NOTE An example of a wireless listening device is a Bluetooth headphone.</p>		N/A
	<p><b>Zx.5 Measurement methods</b>            Measurements shall be made in accordance with EN 50332-1 or EN 50332-2 as applicable. Unless stated otherwise, the time interval T shall be 30 s.</p> <p>NOTE Test method for wireless equipment provided without listening device should be defined.</p>		N/A

IEC60950_1F - ATTACHMENT			
Clause	Requirement + Test	Result - Remark	Verdict

**IEC 60950-1, GROUP DIFFERENCES (CENELEC common modifications EN)**

Clause	Requirement + Test	Result - Remark	Verdict						
2.7.1	<p>Replace the subclause as follows:</p> <p><b>Basic requirements</b></p> <p>To protect against excessive current, short-circuits and earth faults in PRIMARY CIRCUITS, protective devices shall be included either as integral parts of the equipment or as parts of the building installation, subject to the following, a), b) and c):</p> <p>a) except as detailed in b) and c), protective devices necessary to comply with the requirements of 5.3 shall be included as parts of the equipment;</p> <p>b) for components in series with the mains input to the equipment such as the supply cord, appliance coupler, r.f.i. filter and switch, short-circuit and earth fault protection may be provided by protective devices in the building installation;</p>	Replaced.	N/A						
	<p>c) it is permitted for PLUGGABLE EQUIPMENT TYPE B or PERMANENTLY CONNECTED EQUIPMENT, to rely on dedicated overcurrent and short-circuit protection in the building installation, provided that the means of protection, e.g. fuses or circuit breakers, is fully specified in the installation instructions.</p> <p>If reliance is placed on protection in the building installation, the installation instructions shall so state, except that for PLUGGABLE EQUIPMENT TYPE A the building installation shall be regarded as providing protection in accordance with the rating of the wall socket outlet.</p>		N/A						
2.7.2	This subclause has been declared 'void'.	Declared.	N/A						
3.2.3	Delete the NOTE in Table 3A, and delete also in this table the conduit sizes in parentheses.	Delete.	N/A						
3.2.5.1	<p>Replace "60245 IEC 53" by "H05 RR-F";</p> <p>"60227 IEC 52" by "H03 VV-F or H03 VVH2-F";</p> <p>"60227 IEC 53" by "H05 VV-F or H05 VVH2-F2".</p> <p>In Table 3B, replace the first four lines by the following:</p> <table border="0"> <tr> <td>Up to and including 6  </td> <td>0,75<sup>a)</sup>  </td> </tr> <tr> <td>Over 6 up to and including 10  </td> <td>(0,75)<sup>b)</sup> 1,0  </td> </tr> <tr> <td>Over 10 up to and including 16  </td> <td>(1,0)<sup>c)</sup> 1,5  </td> </tr> </table> <p>In the conditions applicable to Table 3B delete the words "in some countries" in condition<sup>a)</sup>.</p> <p>In NOTE 1, applicable to Table 3B, delete the second sentence.</p>	Up to and including 6	0,75 <sup>a)</sup>	Over 6 up to and including 10	(0,75) <sup>b)</sup> 1,0	Over 10 up to and including 16	(1,0) <sup>c)</sup> 1,5	Replaced.	N/A
Up to and including 6	0,75 <sup>a)</sup>								
Over 6 up to and including 10	(0,75) <sup>b)</sup> 1,0								
Over 10 up to and including 16	(1,0) <sup>c)</sup> 1,5								
3.2.5.1 (A2:2013)	NOTE Z1 The harmonised code designations corresponding to the IEC cord types are given in Annex ZD		N/A						

IEC60950_1F - ATTACHMENT			
Clause	Requirement + Test	Result - Remark	Verdict

<b>IEC 60950-1, GROUP DIFFERENCES (CENELEC common modifications EN)</b>			
Clause	Requirement + Test	Result - Remark	Verdict
3.3.4	In Table 3D, delete the fourth line: conductor sizes for 10 to 13 A, and replace with the following: Over 10 up to and including 16   1,5 to 2,5   1,5 to 4 Delete the fifth line: conductor sizes for 13 to 16 A	Delete.	N/A
4.3.13.6 (A1:2010)	Replace the existing NOTE by the following: NOTE Z1 Attention is drawn to: 1999/519/EC: Council Recommendation on the limitation of exposure of the general public to electromagnetic fields 0 Hz to 300 GHz, and 2006/25/EC: Directive on the minimum health and safety requirements regarding the exposure of workers to risks arising from physical agents (artificial optical radiation).	Replaced.	N/A
	Standards taking into account mentioned Recommendation and Directive which demonstrate compliance with the applicable EU Directive are indicated in the OJEC.		N/A
Annex H	Replace the last paragraph of this annex by: At any point 10 cm from the surface of the OPERATOR ACCESS AREA, the dose rate shall not exceed 1 µSv/h (0,1 mR/h) (see NOTE). Account is taken of the background level. Replace the notes as follows: NOTE These values appear in Directive 96/29/Euratom. Delete NOTE 2.	Replaced.	N/A
Bibliography	Additional EN standards.	Added.	—

<b>ZA</b>	<b>NORMATIVE REFERENCES TO INTERNATIONAL PUBLICATIONS WITH THEIR CORRESPONDING EUROPEAN PUBLICATIONS</b>	—
-----------	--	---

<b>ZB ANNEX (normative) SPECIAL NATIONAL CONDITIONS (EN)</b>			
Clause	Requirement + Test	Result - Remark	Verdict
1.2.4.1	In <b>Denmark</b> , certain types of Class I appliances (see 3.2.1.1) may be provided with a plug not establishing earthing conditions when inserted into Danish socket-outlets.	No power supply cord provided.	N/A
1.2.13.14 (A11:2009)	In <b>Norway</b> and <b>Sweden</b> , for requirements see 1.7.2.1 and 7.3 of this annex.	The equipment is not connected to the cable distribution systems.	N/A

IEC60950_1F - ATTACHMENT			
Clause	Requirement + Test	Result - Remark	Verdict

<b>ZB ANNEX (normative)</b> <b>SPECIAL NATIONAL CONDITIONS (EN)</b>			
Clause	Requirement + Test	Result - Remark	Verdict
1.5.7.1 (A11:2009)	In <b>Finland, Norway</b> and <b>Sweden</b> , resistors bridging BASIC INSULATION in CLASS I PLUGGABLE EQUIPMENT TYPE A must comply with the requirements in 1.5.7.1. In addition when a single resistor is used, the resistor must withstand the resistor test in 1.5.7.2.	No such resistors.	N/A
1.5.8	In <b>Norway</b> , due to the IT power system used (see annex V, Figure V.7), capacitors are required to be rated for the applicable line-to-line voltage (230 V).	Class III equipment	N/A
1.5.9.4	In <b>Finland, Norway</b> and <b>Sweden</b> , the third dashed sentence is applicable only to equipment as defined in 6.1.2.2 of this annex.	No TNV circuit within the equipment.	N/A

IEC60950_1F - ATTACHMENT			
Clause	Requirement + Test	Result - Remark	Verdict

<b>ZB ANNEX (normative)</b> <b>SPECIAL NATIONAL CONDITIONS (EN)</b>			
Clause	Requirement + Test	Result - Remark	Verdict
1.7.2.1	<p>In <b>Finland, Norway and Sweden</b>, CLASS I PLUGGABLE EQUIPMENT TYPE A intended for connection to other equipment or a network shall, if safety relies on connection to protective earth or if surge suppressors are connected between the network terminals and accessible parts, have a marking stating that the equipment must be connected to an earthed mains socket-outlet.</p> <p>The marking text in the applicable countries shall be as follows:</p> <p>In <b>Finland</b>: "Laite on liitettävä suojakoskettimilla varustettuun pistorasiaan"</p> <p>In <b>Norway</b>: "Apparatet må tilkoples jordet stikkontakt"</p> <p>In <b>Sweden</b>: "Apparaten skall anslutas till jordat uttag"</p>	Class III equipment	N/A
1.7.2.1 (A11:2009)	<p>In <b>Norway and Sweden</b>, the screen of the cable distribution system is normally not earthed at the entrance of the building and there is normally no equipotential bonding system within the building. Therefore the protective earthing of the building installation need to be isolated from the screen of a cable distribution system.</p> <p>It is however accepted to provide the insulation external to the equipment by an adapter or an interconnection cable with galvanic isolator, which may be provided by e.g. a retailer.</p> <p>The user manual shall then have the following or similar information in Norwegian and Swedish language respectively, depending on in what country the equipment is intended to be used in:</p> <p>"Equipment connected to the protective earthing of the building installation through the mains connection or through other equipment with a connection to protective earthing – and to a cable distribution system using coaxial cable, may in some circumstances create a fire hazard. Connection to a cable distribution system has therefore to be provided through a device providing electrical isolation below a certain frequency range (galvanic isolator, see EN 60728-11)."</p>		

IEC60950_1F - ATTACHMENT			
Clause	Requirement + Test	Result - Remark	Verdict

<b>ZB ANNEX (normative)</b> <b>SPECIAL NATIONAL CONDITIONS (EN)</b>			
Clause	Requirement + Test	Result - Remark	Verdict
	<p>NOTE In Norway, due to regulation for installations of cable distribution systems, and in Sweden, a galvanic isolator shall provide electrical insulation below 5 MHz. The insulation shall withstand a dielectric strength of 1,5 kV r.m.s., 50 Hz or 60 Hz, for 1 min.</p> <p>Translation to Norwegian (the Swedish text will also be accepted in Norway):            "Utstyr som er koplet til beskyttelsesjord via nettplugg og/eller via annet jordtilkoplet utstyr – og er tilkoplet et kabel-TV nett, kan forårsake brannfare. For å unngå dette skal det ved tilkopling av utstyret til kabel-TV nettet installeres en galvanisk isolator mellom utstyret og kabel-TV nettet."</p> <p>Translation to Swedish:            "Utrustning som är kopplad till skyddsjord via jordat vägguttag och/eller via annan utrustning och samtidigt är kopplad till kabel-TV nät kan i vissa fall medföra risk för brand. För att undvika detta skall vid anslutning av utrustningen till kabel-TV nät galvanisk isolator finnas mellan utrustningen och kabel-TV nätet."</p>		N/A
1.7.2.1 (A2:2013)	<p>In <b>Denmark</b>, CLASS I PLUGGABLE EQUIPMENT TYPE A intended for connection to other equipment or a network shall, if safety relies on connection to protective earth or if surge suppressors are connected between the network terminals and accessible parts, have a marking stating that the equipment must be connected to an earthed mains socket-outlet.</p> <p>The marking text in <b>Denmark</b> shall be as follows:            In <b>Denmark</b>: "Apparatets stikprop skal tilsluttes en stikkontakt med jord, som giver forbindelse til stikproppens jord."</p>		N/A
1.7.5  1.7.5 (A11:2009)	<p>In <b>Denmark</b>, socket-outlets for providing power to other equipment shall be in accordance with the Heavy Current Regulations, Section 107-2-D1, Standard Sheet DK 1-3a, DK 1-5a or DK 1-7a, when used on Class I equipment. For STATIONARY EQUIPMENT the socket-outlet shall be in accordance with Standard Sheet DK 1-1b or DK 1-5a.</p> <p>For <b>CLASS II EQUIPMENT</b> the socket outlet shall be in accordance with Standard Sheet DKA 1-4a.</p>	No socket-outlets provided.	N/A

IEC60950_1F - ATTACHMENT			
Clause	Requirement + Test	Result - Remark	Verdict

<b>ZB ANNEX (normative)</b> <b>SPECIAL NATIONAL CONDITIONS (EN)</b>			
Clause	Requirement + Test	Result - Remark	Verdict

1.7.5 (A2:2013)	<p>In <b>Denmark</b>, socket-outlets for providing power to other equipment shall be in accordance with the DS 60884-2-D1:2011.</p> <p>For class I equipment the following Standard Sheets are applicable: DK 1-3a, DK 1-1c, DK 1-1d, DK 1-5a or DK 1-7a, with the exception for STATIONARY EQUIPMENT where the socket-outlets shall be in accordance with Standard Sheet DK 1-1b, DK 1-1c, DK 1-1d or DK 1-5a.</p> <p>Socket outlets intended for providing power to Class II apparatus with a rated current of 2,5 A shall be in accordance with DS 60884-2-D1 standard sheet DKA 1-4a. Other current rating socket outlets shall be in compliance with by DS 60884-2-D1 Standard Sheet DKA 1-3a or DKA 1-3b.</p> <p>Justification the Heavy Current Regulations, 6c</p>		N/A
2.2.4	In <b>Norway</b> , for requirements see 1.7.2.1, 6.1.2.1 and 6.1.2.2 of this annex.	No TNV circuits within the equipment.	N/A
2.3.2	In <b>Finland, Norway and Sweden</b> there are additional requirements for the insulation. See 6.1.2.1 and 6.1.2.2 of this annex.	No TNV circuits within the equipment.	N/A
2.3.4	In <b>Norway</b> , for requirements see 1.7.2.1, 6.1.2.1 and 6.1.2.2 of this annex.	No TNV circuits within the equipment.	N/A
2.6.3.3	In the <b>United Kingdom</b> , the current rating of the circuit shall be taken as 13 A, not 16 A.		N/A
2.7.1	In the <b>United Kingdom</b> , to protect against excessive currents and short-circuits in the PRIMARY CIRCUIT of DIRECT PLUG-IN EQUIPMENT, tests according to 5.3 shall be conducted, using an external protective device rated 30 A or 32 A. If these tests fail, suitable protective devices shall be included as integral parts of the DIRECT PLUG-IN EQUIPMENT, so that the requirements of 5.3 are met.	The equipment is not direct plug-in equipment.	N/A
2.10.5.13	In <b>Finland, Norway and Sweden</b> , there are additional requirements for the insulation, see 6.1.2.1 and 6.1.2.2 of this annex.	No TNV circuits within the equipment.	N/A
3.2.1.1	<p>In <b>Switzerland</b>, supply cords of equipment having a RATED CURRENT not exceeding 10 A shall be provided with a plug complying with SEV 1011 or IEC 60884-1 and one of the following dimension sheets:</p> <p>SEV 6532-2.1991 Plug Type 15      3P+N+PE 250/400 V, 10 A</p>	No power supply cord provided.	N/A

IEC60950_1F - ATTACHMENT			
Clause	Requirement + Test	Result - Remark	Verdict

<b>ZB ANNEX (normative)</b> <b>SPECIAL NATIONAL CONDITIONS (EN)</b>			
Clause	Requirement + Test	Result - Remark	Verdict

	SEV 6533-2.1991 Plug Type 11 L+N 250 V, 10 A SEV 6534-2.1991 Plug Type 12 L+N+PE 250 V, 10 A In general, EN 60309 applies for plugs for currents exceeding 10 A. However, a 16 A plug and socket-outlet system is being introduced in Switzerland, the plugs of which are according to the following dimension sheets, published in February 1998: SEV 5932-2.1998: Plug Type 25 , 3L+N+PE 230/400 V, 16 A SEV 5933-2.1998: Plug Type 21, L+N, 250 V, 16A SEV 5934-2.1998: Plug Type 23, L+N+PE 250 V, 16 A		
3.2.1.1	In <b>Denmark</b> , supply cords of single-phase equipment having a rated current not exceeding 13 A shall be provided with a plug according to the Heavy Current Regulations, Section 107-2-D1. CLASS I EQUIPMENT provided with socket-outlets with earth contacts or which are intended to be used in locations where protection against indirect contact is required according to the wiring rules shall be provided with a plug in accordance with standard sheet DK 2-1a or DK 2-5a. If poly-phase equipment and single-phase equipment having a RATED CURRENT exceeding 13 A is provided with a supply cord with a plug, this plug shall be in accordance with the Heavy Current Regulations, Section 107-2-D1 or EN 60309-2.	No power supply cord provided.	N/A

IEC60950_1F - ATTACHMENT			
Clause	Requirement + Test	Result - Remark	Verdict

<b>ZB ANNEX (normative)</b> <b>SPECIAL NATIONAL CONDITIONS (EN)</b>			
Clause	Requirement + Test	Result - Remark	Verdict
3.2.1.1 (A2:2013)	<p>In <b>Denmark</b>, supply cords of single-phase equipment having a rated current not exceeding 13 A shall be provided with a plug according to DS 60884-2-D1.</p> <p>CLASS I EQUIPMENT provided with socket-outlets with earth contacts or which are intended to be used in locations where protection against indirect contact is required according to the wiring rules shall be provided with a plug in accordance with standard sheet DK 2-1a or DK 2-5a.</p> <p>If a single-phase equipment having a RATED CURRENT exceeding 13 A or if a poly-phase equipment is provided with a supply cord with a plug, this plug shall be in accordance with the standard sheets DK 6-1a in DS 60884-2-D1 or EN 60309-2.</p> <p>Justification the Heavy Current Regulations, 6c</p>	No power supply cord provided.	N/A
3.2.1.1	<p>In <b>Spain</b>, supply cords of single-phase equipment having a rated current not exceeding 10 A shall be provided with a plug according to UNE 20315:1994.</p> <p>Supply cords of single-phase equipment having a rated current not exceeding 2,5 A shall be provided with a plug according to UNE-EN 50075:1993.</p> <p>CLASS I EQUIPMENT provided with socket-outlets with earth contacts or which are intended to be used in locations where protection against indirect contact is required according to the wiring rules, shall be provided with a plug in accordance with standard UNE 20315:1994.</p> <p>If poly-phase equipment is provided with a supply cord with a plug, this plug shall be in accordance with UNE-EN 60309-2.</p>	No power supply cord provided.	N/A
3.2.1.1	<p>In the <b>United Kingdom</b>, apparatus which is fitted with a flexible cable or cord and is designed to be connected to a mains socket conforming to BS 1363 by means of that flexible cable or cord and plug, shall be fitted with a 'standard plug' in accordance with Statutory Instrument 1768:1994 - The Plugs and Sockets etc. (Safety) Regulations 1994, unless exempted by those regulations.</p> <p>NOTE 'Standard plug' is defined in SI 1768:1994 and essentially means an approved plug conforming to BS 1363 or an approved conversion plug.</p>	No power supply cord provided.	N/A

IEC60950_1F - ATTACHMENT			
Clause	Requirement + Test	Result - Remark	Verdict

<b>ZB ANNEX (normative)</b> <b>SPECIAL NATIONAL CONDITIONS (EN)</b>			
Clause	Requirement + Test	Result - Remark	Verdict
3.2.1.1	In <b>Ireland</b> , apparatus which is fitted with a flexible cable or cord and is designed to be connected to a mains socket conforming to I.S. 411 by means of that flexible cable or cord and plug, shall be fitted with a 13 A plug in accordance with Statutory Instrument 525:1997 - National Standards Authority of Ireland (section 28) (13 A Plugs and Conversion Adaptors for Domestic Use) Regulations 1997.	No power supply cord provided.	N/A
3.2.4	In <b>Switzerland</b> , for requirements see 3.2.1.1 of this annex.	Shall be evaluated during the national approval.	N/A
3.2.5.1	In the <b>United Kingdom</b> , a power supply cord with conductor of 1,25 mm <sup>2</sup> is allowed for equipment with a rated current over 10 A and up to and including 13 A.	No power supply cord provided.	N/A
3.3.4	In the <b>United Kingdom</b> , the range of conductor sizes of flexible cords to be accepted by terminals for equipment with a RATED CURRENT of over 10 A up to and including 13 A is: • 1,25 mm <sup>2</sup> to 1,5 mm <sup>2</sup> nominal cross-sectional area.	No power supply cord provided.	N/A
4.3.6	In the <b>United Kingdom</b> , the torque test is performed using a socket outlet complying with BS 1363 part 1:1995, including Amendment 1:1997 and Amendment 2:2003 and the plug part of DIRECT PLUG-IN EQUIPMENT shall be assessed to BS 1363: Part 1, 12.1, 12.2, 12.3, 12.9, 12.11, 12.12, 12.13, 12.16 and 12.17, except that the test of 12.17 is performed at not less than 125 °C. Where the metal earth pin is replaced by an Insulated Shutter Opening Device (ISOD), the requirements of clauses 22.2 and 23 also apply.	The equipment is not direct plug-in equipment.	N/A
4.3.6	In <b>Ireland</b> , DIRECT PLUG-IN EQUIPMENT is known as plug similar devices. Such devices shall comply with Statutory Instrument 526:1997 - National Standards Authority of Ireland (Section 28) (Electrical plugs, plug similar devices and sockets for domestic use) Regulations, 1997.	The equipment is not direct plug-in equipment.	N/A

IEC60950_1F - ATTACHMENT			
Clause	Requirement + Test	Result - Remark	Verdict

<b>ZB ANNEX (normative)</b> <b>SPECIAL NATIONAL CONDITIONS (EN)</b>			
Clause	Requirement + Test	Result - Remark	Verdict

5.1.7.1	<p>In <b>Finland, Norway and Sweden</b> TOUCH CURRENT measurement results exceeding 3,5 mA r.m.s. are permitted only for the following equipment:</p> <ul style="list-style-type: none"> <li>• STATIONARY PLUGGABLE EQUIPMENT TYPE A that is intended to be used in a RESTRICTED ACCESS LOCATION where equipotential bonding has been applied, for example, in a telecommunication centre; and has provision for a permanently connected PROTECTIVE EARTHING CONDUCTOR; and is provided with instructions for the installation of that conductor by a SERVICE PERSON;</li> <li>• STATIONARY PLUGGABLE EQUIPMENT TYPE B;</li> <li>• STATIONARY PERMANENTLY CONNECTED EQUIPMENT.</li> </ul>	The equipment is not such equipment.	N/A
6.1.2.1 (A1:2010)	<p>In <b>Finland, Norway and Sweden</b>, add the following text between the first and second paragraph of the compliance clause:</p> <p>If this insulation is solid, including insulation forming part of a component, it shall at least consist of either</p> <ul style="list-style-type: none"> <li>- two layers of thin sheet material, each of which shall pass the electric strength test below, or</li> <li>- one layer having a distance through insulation of at least 0,4 mm, which shall pass the electric strength test below.</li> </ul> <p>Alternatively for components, there is no distance through insulation requirements for the insulation consisting of an insulating compound completely filling the casing, so that CLEARANCES and CREEPAGE DISTANCES do not exist, if the component passes the electric strength test in accordance with the compliance clause below and in addition</p> <ul style="list-style-type: none"> <li>- passes the tests and inspection criteria of 2.10.11 with an electric strength test of 1,5 kV multiplied by 1,6 (the electric strength test of 2.10.10 shall be performed using 1,5 kV), and</li> <li>- is subject to ROUTINE TESTING for electric strength during manufacturing, using a test voltage of 1,5 kV.</li> </ul>	No TNV circuits within the equipment.	N/A

IEC60950_1F - ATTACHMENT			
Clause	Requirement + Test	Result - Remark	Verdict

<b>ZB ANNEX (normative)</b> <b>SPECIAL NATIONAL CONDITIONS (EN)</b>			
Clause	Requirement + Test	Result - Remark	Verdict
	<p>It is permitted to bridge this insulation with an optocoupler complying with 2.10.5.4 b).</p> <p>It is permitted to bridge this insulation with a capacitor complying with EN 60384-14:2005, subclass Y2.</p> <p>A capacitor classified Y3 according to EN 60384-14:2005, may bridge this insulation under the following conditions:</p> <ul style="list-style-type: none"> <li>- the insulation requirements are satisfied by having a capacitor classified Y3 as defined by EN 60384-14, which in addition to the Y3 testing, is tested with an impulse test of 2,5 kV defined in EN 60950-1:2006, 6.2.2.1;</li> <li>- the additional testing shall be performed on all the test specimens as described in EN 60384-14:</li> <li>- the impulse test of 2,5 kV is to be performed before the endurance test in EN 60384-14, in the sequence of tests as described in EN 60384-14.</li> </ul>		
6.1.2.2	<p>In <b>Finland, Norway and Sweden</b>, the exclusions are applicable for PERMANENTLY CONNECTED EQUIPMENT, PLUGGABLE EQUIPMENT TYPE B and equipment intended to be used in a RESTRICTED ACCESS LOCATION where equipotential bonding has been applied, e.g. in a telecommunication centre, and which has provision for a permanently connected PROTECTIVE EARTHING CONDUCTOR and is provided with instructions for the installation of that conductor by a SERVICE PERSON.</p>	No TNV circuits within the equipment.	N/A
7.2	<p>In <b>Finland, Norway and Sweden</b>, for requirements see 6.1.2.1 and 6.1.2.2 of this annex.</p> <p>The term TELECOMMUNICATION NETWORK in 6.1.2 being replaced by the term CABLE DISTRIBUTION SYSTEM.</p>	The equipment is not connected to the distribution systems.	N/A
7.3 (A11:2009)	<p>In <b>Norway and Sweden</b>, for requirements see 1.2.13.14 and 1.7.2.1 of this annex.</p>		N/A

IEC60950_1F - ATTACHMENT			
Clause	Requirement + Test	Result - Remark	Verdict

**Annex ZD  
(informative)**

**IEC and CENELEC code designations for flexible cords**

Type of flexible cord	Code designations	
	IEC	CENELEC
<b>PVC insulated cords</b>		
Flat twin tinsel cord	60227 IEC 41	H03VH-Y
Light polyvinyl chloride sheathed flexible cord	60227 IEC 52	H03VV-F H03VVH2-F
Ordinary polyvinyl chloride sheathed flexible cord	60277 IEC 53	H05VV-F H05VVH2-F
<b>Rubber insulated cords</b>		
Braided cord	60245 IEC 51	H03RT-F
Ordinary tough rubber sheathed flexible cord	60245 IEC 53	H05RR-F
Ordinary polychloroprene sheathed flexible cord	60245 IEC 57	H05RN-F
Heavy polychloroprene sheathed flexible cord	60245 IEC 66	H07RN-F
<b>Cords having high flexibility</b>		
Rubber insulated and sheathed cord	60245 IEC 86	H03RR-H
Rubber insulated, crosslinked PVC sheathed cord	60245 IEC 87	H03RV4-H
Crosslinked PVC insulated and sheathed cord	60245 IEC 88	H03V4V4-H

PHOTOS



External View-1(for model H5)



External View- 1(for model H3)

PHOTOS



External View -2(for all model)

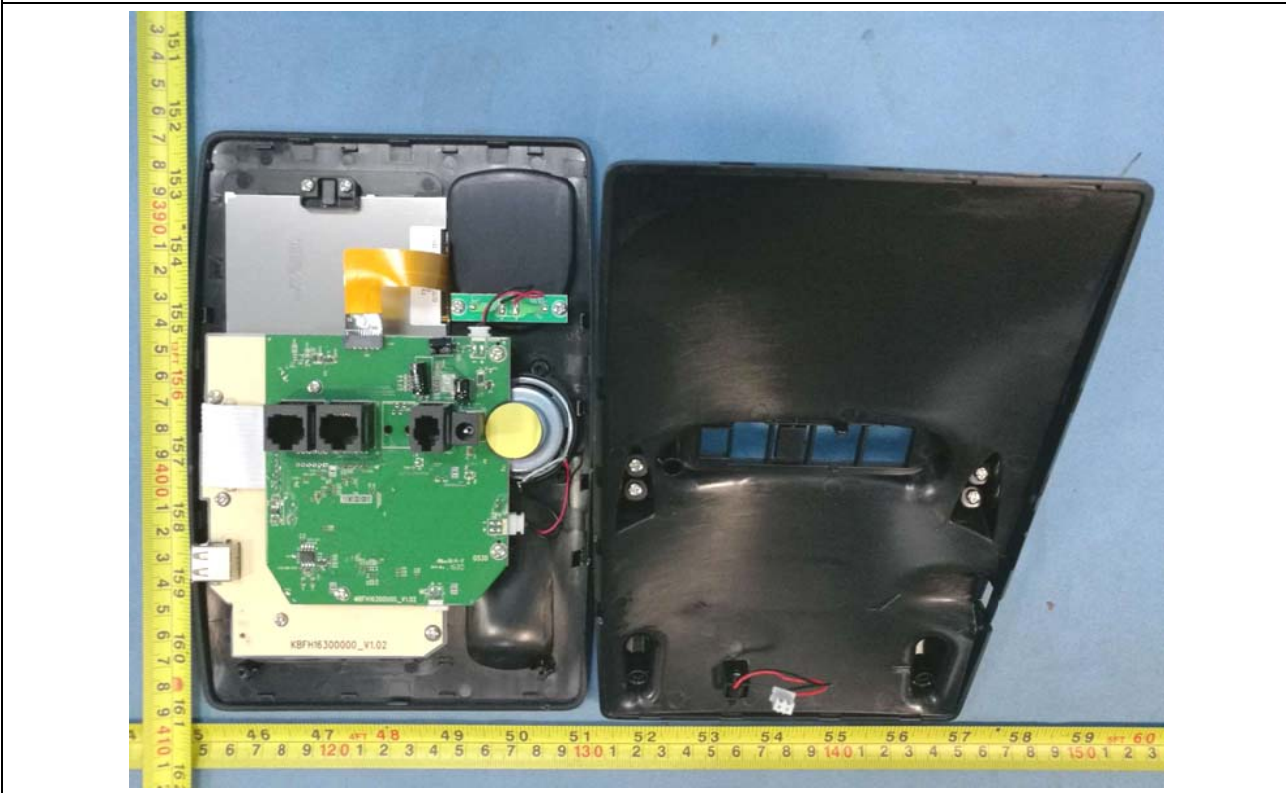


Terminal View -1(for all model)

PHOTOS



Terminal View -2(for all model)



External View- 1(for model H5)

## PHOTOS

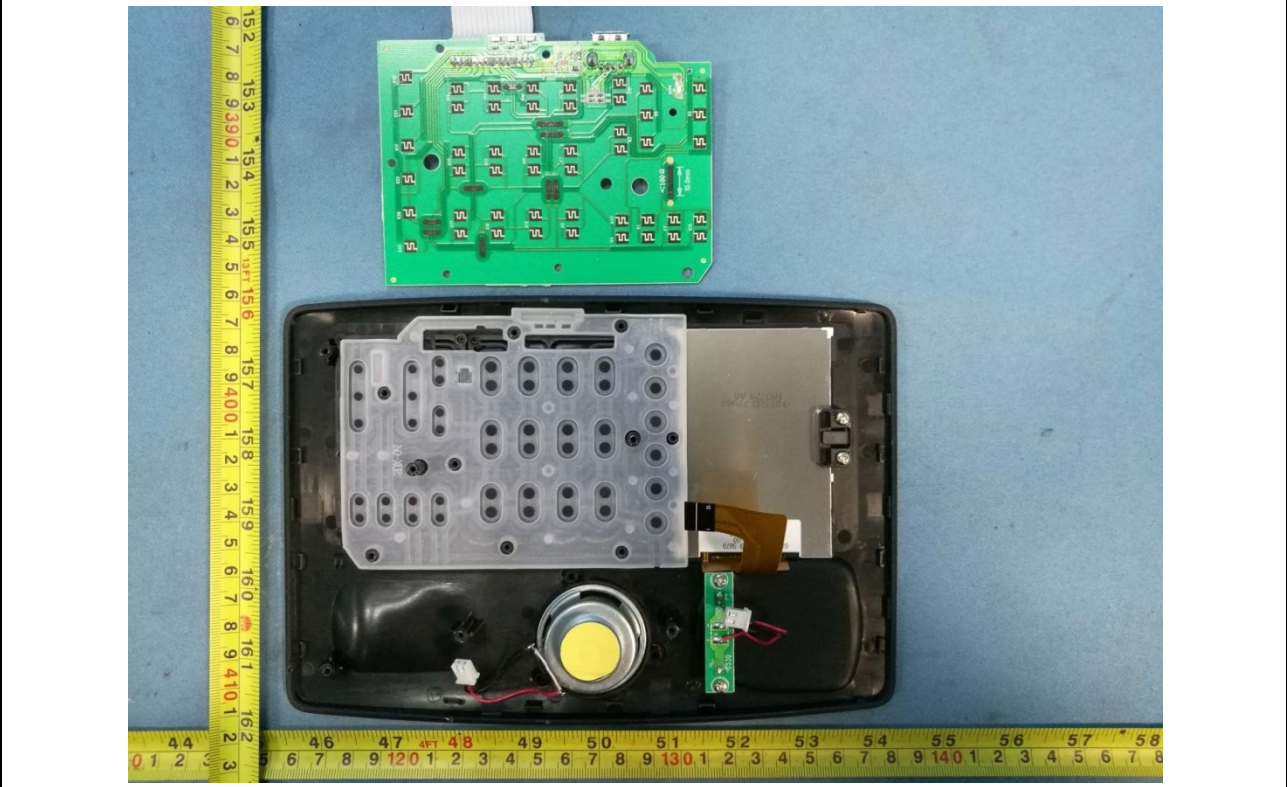


External View- 1(for model H3)

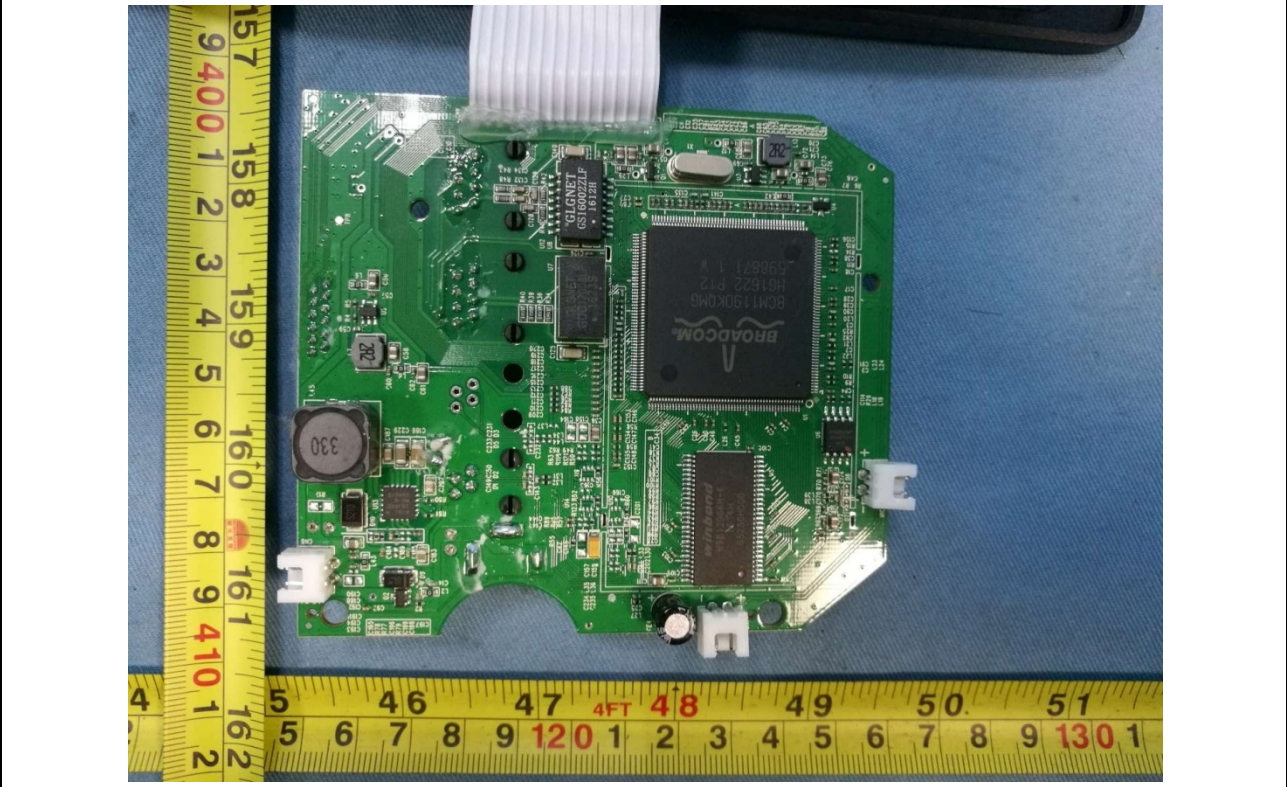


Internal View- 2(for all model)

PHOTOS

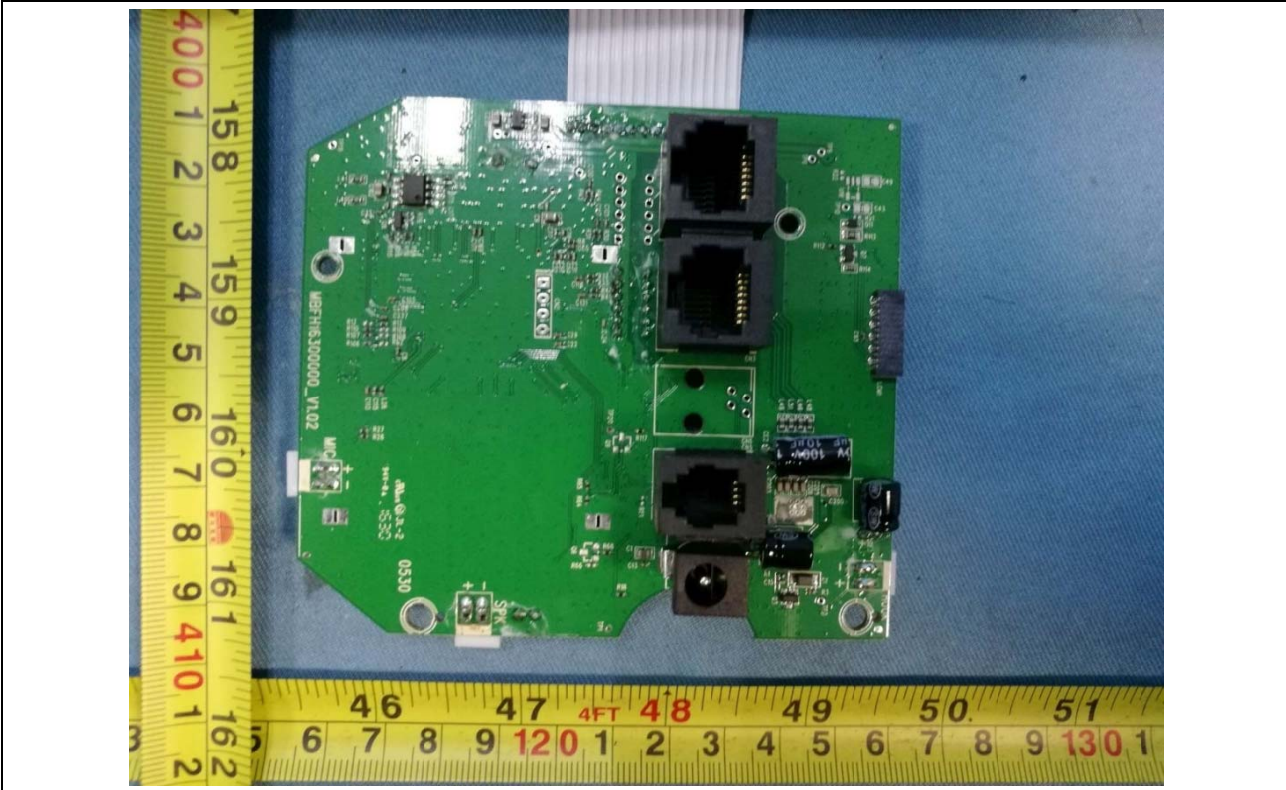


Internal View- 3(for all model)



Component side of Mainboard(for all model)

PHOTOS



Solder side of Mainboard(for all model)



Adapter View -1

PHOTOS



Adapter View -2